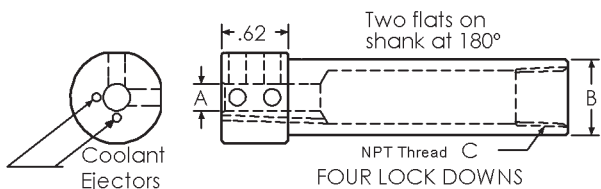


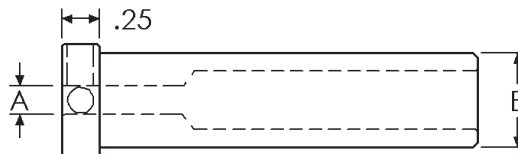
COOLANT HOLDERS



QHC Holders

A I.D.	B O.D.	C NPT	OAL	Order #	Replacement Parts Kit (6) Set Screws (1) Allen Key
0.1250	0.375	0.062NPT	2.50	QHC37-1/8	PKH-3/16
0.1562	0.375	0.062NPT	2.50	QHC37-5/32	PKH-3/16
0.1875	0.375	0.062NPT	2.50	QHC37-3/16	PKH-3/16
0.1250	0.500	0.125NPT	2.75	QHC50-1/8	PKH-1/4
0.1875	0.500	0.125NPT	2.75	QHC50-3/16	PKH-3/16
0.2500	0.500	0.125NPT	2.75	QHC50-1/4	PKH-3/16
0.1250	0.625	0.250NPT	3.25	QHC62-1/8	PKH-1/4
0.1562	0.625	0.250NPT	3.25	QHC62-5/32	PKH-1/4
0.1875	0.625	0.250NPT	3.25	QHC62-3/16	PKH-1/4
0.2187	0.625	0.250NPT	3.25	QHC62-7/32	PKH-1/4
0.2500	0.625	0.250NPT	3.25	QHC62-1/4	PKH-1/4
0.1250	0.750	0.375NPT	3.25	QHC75-1/8	PKH-3/8
0.1562	0.750	0.375NPT	3.25	QHC75-5/32	PKH-3/8
0.1875	0.750	0.375NPT	3.25	QHC75-3/16	PKH-1/4
0.2187	0.750	0.375NPT	3.25	QHC75-7/32	PKH-1/4
0.2500	0.750	0.375NPT	3.25	QHC75-1/4	PKH-1/4
0.3125	0.750	0.375NPT	3.25	QHC75-5/16	PKH-1/4
0.3750	0.750	0.375NPT	3.25	QHC75-3/8	PKH-1/4
0.1250	1.000	0.500NPT	3.25	QHC10-1/8	PKH-1/2
0.1875	1.000	0.500NPT	3.25	QHC10-3/16	PKH-1/2
0.2500	1.000	0.500NPT	3.25	QHC10-1/4	PKH-3/8
0.3125	1.000	0.500NPT	3.25	QHC10-5/16	PKH-3/8
0.3750	1.000	0.500NPT	3.25	QHC10-3/8	PKH-3/8
0.5000	1.000	0.500NPT	3.25	QHC10-1/2	PKH-1/4

STANDARD HOLDERS



TWO LOCK DOWNS

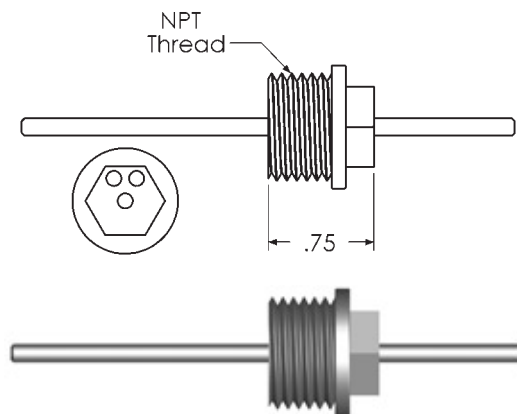
Standard Holders

A I.D.	B O.D.	OAL	Order #	Replacement Parts Kit (6) Set Screws (1) Allen Key
0.1250	0.375	2.00	DH37-1/8	PKH-3/16
0.1562	0.375	2.00	DH37-5/32	PKH-3/16
0.1875	0.375	2.00	DH37-3/16	PKH-3/16
0.2187	0.375	2.00	DH37-7/32	PKH-3/16
0.2500	0.375	2.00	DH37-1/4	PKH-1/8
0.1250	0.500	2.75	DH50-1/8	PKH-1/4
0.1562	0.500	2.75	DH50-5/32	PKH-1/4
0.1875	0.500	2.75	DH50-3/16	PKH-1/4
0.2187	0.500	2.75	DH50-7/32	PKH-3/16
0.2500	0.500	2.75	DH50-1/4	PKH-3/16
0.3125	0.500	2.75	DH50-5/16	PKH-3/16
0.3750	0.500	2.75	DH50-3/8	PKH-1/8
0.1250	0.625	2.75	DH62-1/8	PKH-1/4
0.1562	0.625	2.75	DH62-5/32	PKH-1/4
0.1875	0.625	2.75	DH62-3/16	PKH-1/4
0.2187	0.625	2.75	DH62-7/32	PKH-1/4
0.2500	0.625	2.75	DH62-1/4	PKH-1/4
0.3125	0.625	2.75	DH62-5/16	PKH-3/16
0.3750	0.625	2.75	DH62-3/8	PKH-3/16
0.1250	0.750	2.75	DH75-1/8	PKH-3/8
0.1875	0.750	2.75	DH75-3/16	PKH-3/8
0.2500	0.750	2.75	DH75-1/4	PKH-1/4
0.3125	0.750	2.75	DH75-5/16	PKH-1/4
0.3750	0.750	2.75	DH75-3/8	PKH-1/4
0.5000	0.750	2.75	DH75-1/2	PKH-3/16

BACK STOPS

Back Stops for QHC Series

Outside Diameter	NPT Thread	Stop Rod Diameter	Stop Rod OAL	Holder Series	Order #	Kit (6) Set Screws (1) Allen Key
0.375	0.062NPT	0.093	2.75	QHC37	QHC37-BKS	PKH-1/8
0.500	0.125NPT	0.125	3.00	QHC50	QHC50-BKS	PKH-1/8
0.625	0.250NPT	0.125	3.00	QHC62	QHC62-BKS	PKH-3/16
0.750	0.375NPT	0.125	3.00	QHC75	QHC75-BKS	PKH-3/16
1.000	0.500NPT	0.125	3.50	QHC10	QHC10-BKS	PKH-3/16



Scientific Cutting Tools, Inc.

(805) 584-9495
(800) 383-2244

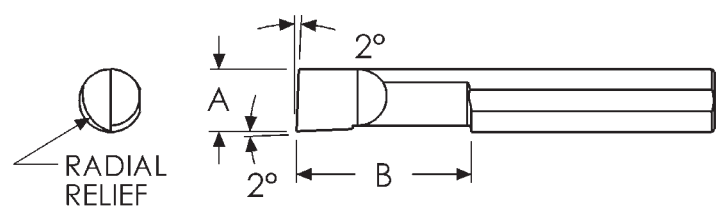
Fax: (805) 584-9629
Fax: (888) 728-3295

Web: www.sct-usa.com
Email: sales@sct-usa.com



SINGLE POINT TOOLS

BORING BARS - RADIAL RELIEF - SOLID CARBIDE

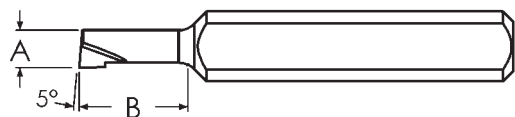


OAL	A MIN HOLE	B MAX DEPTH	UNCOATED ORDER #	TIALN ORDER #
1/8" SHANK DIA.				
1.50	0.060	0.125	BB61	BB61A
1.50	0.060	0.250	BB62	BB62A
1.50	0.060	0.375	BB63	BB63A
1.50	0.060	0.500	BB64	BB64A
1.50	0.075	0.125	BB71	BB71A
1.50	0.075	0.250	BB72	BB72A
1.50	0.075	0.375	BB73	BB73A
1.50	0.075	0.500	BB74	BB74A
1.50	0.090	0.125	BB91	BB91A
1.50	0.090	0.250	BB92	BB92A
1.50	0.090	0.375	BB93	BB93A
1.50	0.090	0.500	BB94	BB94A
1.50	0.090	0.625	BB95	BB95A
1.50	0.105	0.250	BB102	BB102A
1.50	0.105	0.375	BB103	BB103A
1.50	0.105	0.500	BB104	BB104A
1.50	0.105	0.625	BB105	BB105A
1.50	0.120	0.250	BB122	BB122A
1.50	0.120	0.375	BB123	BB123A
1.50	0.120	0.500	BB124	BB124A
1.50	0.120	0.625	BB125	BB125A
1.50	0.120	0.750	BB126	BB126A
3/16" SHANK DIA.				
1.50	0.155	0.375	BB153	BB153A
1.50	0.155	0.500	BB154	BB154A
1.50	0.155	0.625	BB155	BB155A
1.50	0.155	0.750	BB156	BB156A
2.00	0.155	1.000	BB158	BB158A
1.50	0.185	0.375	BB183	BB183A
1.50	0.185	0.500	BB184	BB184A
1.50	0.185	0.625	BB185	BB185A
1.50	0.185	0.750	BB186	BB186A

OAL	A MIN HOLE	B MAX DEPTH	UNCOATED ORDER #	TIALN ORDER #
3/16" SHANK DIA.				
2.00	0.185	1.000	BB188	BB188A
2.00	0.185	1.250	BB1812	BB1812A
1/4" SHANK DIA.				
1.50	0.220	0.500	BB224	BB224A
1.50	0.220	0.625	BB225	BB225A
2.00	0.220	0.750	BB226	BB226A
2.00	0.220	1.000	BB228	BB228A
2.50	0.220	1.250	BB2212	BB2212A
1.50	0.248	0.500	BB254	BB254A
1.50	0.248	0.625	BB255	BB255A
2.00	0.248	0.750	BB256	BB256A
2.00	0.248	1.000	BB258	BB258A
2.50	0.248	1.250	BB2512	BB2512A
2.50	0.248	1.500	BB2514	BB2514A
5/16" SHANK DIA.				
2.00	0.310	0.500	BB314	BB314A
2.00	0.310	0.750	BB316	BB316A
2.50	0.310	0.750	BB316L	BB316LA
2.50	0.310	1.000	BB318	BB318A
2.50	0.310	1.250	BB3112	BB3112A
2.50	0.310	1.500	BB3114	BB3114A
3.00	0.310	1.750	BB3116	BB3116A
3/8" SHANK DIA.				
2.00	0.373	0.500	BB374	BB374A
2.00	0.373	0.750	BB376	BB376A
2.50	0.373	0.750	BB376L	BB376LA
2.50	0.373	1.000	BB378	BB378A
2.50	0.373	1.250	BB3712	BB3712A
2.50	0.373	1.500	BB3714	BB3714A
3.00	0.373	1.500	BB3714L	BB3714LA
3.00	0.373	1.750	BB3716	BB3716A
3.00	0.373	2.000	BB3718	BB3718A

SINGLE POINT TOOLS

MINI-BORING BARS - SOLID CARBIDE



A MIN HOLE	B MAX DEPTH	UNCOATED ORDER #	TIALN ORDER #
1/8" SHANK DIA., 1 1/2" OAL			
0.015	0.050	MB015050	MB015050A
0.020	0.075	MB020075	MB020075A
0.025	0.100	MB025100	MB025100A
0.025	0.125	MB025125	MB025125A
0.030	0.100	MB030100	MB030100A
0.030	0.125	MB030125	MB030125A
0.030	0.150	MB030150	MB030150A

A MIN HOLE	B MAX DEPTH	UNCOATED ORDER #	TIALN ORDER #
1/8" SHANK DIA., 1 1/2" OAL			
0.035	0.100	MB035100	MB035100A
0.035	0.150	MB035150	MB035150A
0.035	0.200	MB035200	MB035200A
0.040	0.100	MB040100	MB040100A
0.040	0.150	MB040150	MB040150A
0.040	0.200	MB040200	MB040200A
0.040	0.250	MB040250	MB040250A

A MIN HOLE	B MAX DEPTH	UNCOATED ORDER #	TIALN ORDER #
1/8" SHANK DIA., 1 1/2" OAL			
0.045	0.100	MB045100	MB045100A
0.045	0.150	MB045150	MB045150A
0.045	0.200	MB045200	MB045200A
0.045	0.250	MB045250	MB045250A
0.045	0.300	MB045300	MB045300A
0.045	0.300	MB045350	MB045350A

Stocked: TiALN = A; Optional: TiN = C, TiCN = N

TOOL HOLDERS - SEE PAGE 15



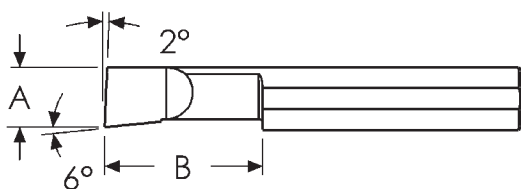
Scientific Cutting Tools, Inc.

(805) 584-9495
(800) 383-2244

Fax: (805) 584-9629
Fax: (888) 728-3295

Web: www.sct-usa.com
Email: sales@sct-usa.com

BORING BARS - SOLID CARBIDE



A MIN HOLE	B MAX DEPTH	UNCOATED ORDER #	TIALN ORDER #
1/8" SHANK DIA., 1 1/2" OAL			
0.050	0.150	B050150	B050150A
0.050	0.200	B050200	B050200A
0.050	0.300	B050300	B050300A
0.050	0.400	B050400	B050400A
0.060	0.150	B060150	B060150A
0.060	0.200	B060200	B060200A
0.060	0.300	B060300	B060300A
0.060	0.400	B060400	B060400A
0.060	0.500	B060500	B060500A
0.080	0.150	B080150	B080150A
0.080	0.200	B080200	B080200A
0.080	0.300	B080300	B080300A
0.080	0.400	B080400	B080400A
0.080	0.500	B080500	B080500A
0.080	0.600	B080600	B080600A
0.100	0.150	B100150	B100150A
0.100	0.200	B100200	B100200A
0.100	0.300	B100300	B100300A
0.100	0.400	B100400	B100400A
0.100	0.500	B100500	B100500A
0.100	0.600	B100600	B100600A
0.100	0.700	B100700	B100700A
0.110	0.150	B110150	B110150A
0.110	0.200	B110200	B110200A
0.110	0.300	B110300	B110300A
0.110	0.400	B110400	B110400A
0.110	0.500	B110500	B110500A
0.110	0.600	B110600	B110600A
0.110	0.700	B110700	B110700A
3/16" SHANK DIA., 2" OAL			
0.120	0.250	B120250	B120250A
0.120	0.350	B120350	B120350A
0.120	0.500	B120500	B120500A
0.120	0.600	B120600	B120600A
0.120	0.700	B120700	B120700A
0.120	0.800	B120800	B120800A
0.140	0.250	B140250	B140250A
0.140	0.400	B140400	B140400A
0.140	0.500	B140500	B140500A
0.140	0.600	B140600	B140600A
0.140	0.700	B140700	B140700A
0.140	0.750	B140750	B140750A
0.140	0.800	B140800	B140800A
0.160	0.250	B160250	B160250A
0.160	0.400	B160400	B160400A
0.160	0.500	B160500	B160500A

A MIN HOLE	B MAX DEPTH	UNCOATED ORDER #	TIALN ORDER #
3/16" SHANK DIA., 2" OAL			
0.160	0.600	B160600	B160600A
0.160	0.750	B160750	B160750A
0.160	0.900	B160900	B160900A
0.160	1.000	B1601000	B1601000A
1/4" SHANK DIA., 2 1/2" OAL			
0.180	0.350	B180350	B180350A
0.180	0.500	B180500	B180500A
0.180	0.600	B180600	B180600A
0.180	0.750	B180750	B180750A
0.180	0.900	B180900	B180900A
0.180	1.000	B1801000	B1801000A
0.180	1.100	B1801100	B1801100A
1.180	1.250	B1801250	B1801250A
0.180	1.500	B1801500	B1801500A
0.200	0.400	B200400	B200400A
0.200	0.500	B200500	B200500A
0.200	0.600	B200600	B200600A
0.200	0.700	B200700	B200700A
0.200	0.800	B200800	B200800A
0.200	0.900	B200900	B200900A
0.200	1.000	B2001000	B2001000A
0.200	1.100	B2001100	B2001100A
0.200	1.200	B2001200	B2001200A
0.200	1.300	B2001300	B2001300A
5/16" SHANK DIA., 2 1/2" OAL			
0.230	0.400	B230400	B230400A
0.230	0.500	B230500	B230500A
0.230	0.600	B230600	B230600A
0.230	0.700	B230700	B230700A
0.230	0.800	B230800	B230800A
0.230	0.900	B230900	B230900A
0.230	1.000	B2301000	B2301000A
0.230	1.100	B2301100	B2301100A
0.230	1.150	B2301150	B2301150A
0.230	1.200	B2301200	B2301200A
0.230	1.250	B2301250	B2301250A
0.230	1.400	B2301400	B2301400A
0.230	1.500	B2301500	B2301500A
0.230	1.600	B2301600	B2301600A
0.290	0.500	B290500	B290500A
0.290	0.600	B290600	B290600A
0.290	0.750	B290750	B290750A
0.290	0.900	B290900	B290900A
0.290	1.000	B2901000	B2901000A
0.290	1.100	B2901100	B2901100A
0.290	1.250	B2901250	B2901250A
0.290	1.350	B2901350	B2901350A
0.290	1.500	B2901500	B2901500A
0.290	1.600	B2901600	B2901600A
0.290	1.750	B2901750	B2901750A

A MIN HOLE	B MAX DEPTH	UNCOATED ORDER #	TIALN ORDER #
3/8" SHANK DIA., 2 1/2" OAL			
0.320	0.500	B320500	B320500A
0.320	0.600	B320600	B320600A
0.320	0.750	B320750	B320750A
0.320	0.900	B320900	B320900A
0.320	1.000	B3201000	B3201000A
0.320	1.100	B3201100	B3201100A
0.320	1.250	B3201250	B3201250A
0.320	1.500	B3201500	B3201500A
0.320	1.600	B3201600	B3201600A
0.320	1.800	B3201800	B3201800A
3/8" SHANK DIA., 4" OAL			
0.320	2.000	B3202000	B3202000A
0.320	2.500	B3202500	B3202500A
0.320	3.000	B3203000	B3203000A
3/8" SHANK DIA., 2 1/2" OAL			
0.360	0.500	B360500	B360500A
0.360	0.600	B360600	B360600A
0.360	0.750	B360750	B360750A
0.360	0.900	B360900	B360900A
0.360	1.000	B3601000	B3601000A
0.360	1.150	B3601150	B3601150A
0.360	1.250	B3601250	B3601250A
0.360	1.500	B3601500	B3601500A
0.360	1.600	B3601600	B3601600A
0.360	1.800	B3601800	B3601800A
3/8" SHANK DIA., 4" OAL			
0.360	2.000	B3602000	B3602000A
0.360	2.500	B3602500	B3602500A
0.360	3.000	B3603000	B3603000A
1/2" SHANK DIA., 3" OAL			
0.490	0.750	B490750	B490750A
0.490	1.000	B4901000	B4901000A
0.490	1.250	B4901250	B4901250A
0.490	1.500	B4901500	B4901500A
1/2" SHANK DIA., 4" OAL			
0.490	2.000	B4902000	B4902000A
0.490	2.500	B4902500	B4902500A
0.490	2.600	B4902600	B4902600A
0.490	2.750	B4902750	B4902750A
1/2" SHANK DIA., 6" OAL			
0.490	3.000	B4903000	B4903000A
0.490	3.500	B4903500	B4903500A
0.490	4.000	B4904000	B4904000A
0.490	4.500	B4904500	B4904500A

TOOL HOLDERS - SEE PAGE 15

Stocked: TIALN = A; Optional: TIN = C, TiCN = N

Scientific Cutting Tools, Inc.

(805) 584-9495
(800) 383-2244

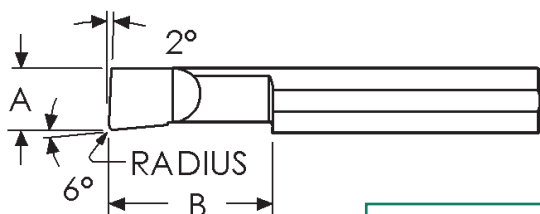
Fax: (805) 584-9629
Fax: (888) 728-3295

Web: www.sct-usa.com
Email: sales@sct-usa.com



SINGLE POINT TOOLS

RADIUS BORING BARS - SOLID CARBIDE



Radius .003" to .005" — 1/8" SHANK DIA.
 Radius .005" to .008" — 3/16" to 1/2" SHANK DIA.

SINGLE POINT TOOLS

A MIN HOLE	B MAX DEPTH	UNCOATED ORDER #	TiAlN ORDER #
1/8" SHANK DIA., 1 1/2" OAL			
0.050	0.150	B050150R	B050150RA
0.050	0.200	B050200R	B050200RA
0.050	0.300	B050300R	B050300RA
0.050	0.400	B050400R	B050400RA
0.060	0.150	B060150R	B060150RA
0.060	0.200	B060200R	B060200RA
0.060	0.300	B060300R	B060300RA
0.060	0.400	B060400R	B060400RA
0.060	0.500	B060500R	B060500RA
0.080	0.150	B080150R	B080150RA
0.080	0.200	B080200R	B080200RA
0.080	0.300	B080300R	B080300RA
0.080	0.400	B080400R	B080400RA
0.080	0.500	B080500R	B080500RA
0.080	0.600	B080600R	B080600RA
0.100	0.150	B100150R	B100150RA
0.100	0.200	B100200R	B100200RA
0.100	0.300	B100300R	B100300RA
0.100	0.400	B100400R	B100400RA
0.100	0.500	B100500R	B100500RA
0.100	0.600	B100600R	B100600RA
0.100	0.700	B100700R	B100700RA
0.110	0.150	B110150R	B110150RA
0.110	0.200	B110200R	B110200RA
0.110	0.300	B110300R	B110300RA
0.110	0.400	B110400R	B110400RA
0.110	0.500	B110500R	B110500RA
0.110	0.600	B110600R	B110600RA
0.110	0.700	B110700R	B110700RA
3/16" SHANK DIA., 2" OAL			
0.120	0.250	B120250R	B120250RA
0.120	0.350	B120350R	B120350RA
0.120	0.500	B120500R	B120500RA
0.120	0.600	B120600R	B120600RA
0.120	0.700	B120700R	B120700RA
0.120	0.800	B120800R	B120800RA
0.140	0.250	B140250R	B140250RA
0.140	0.400	B140400R	B140400RA
0.140	0.500	B140500R	B140500RA
0.140	0.600	B140600R	B140600RA
0.140	0.700	B140700R	B140700RA
0.140	0.750	B140750R	B140750RA
0.140	0.800	B140800R	B140800RA
0.160	0.250	B160250R	B160250RA
0.160	0.400	B160400R	B160400RA
0.160	0.500	B160500R	B160500RA

A MIN HOLE	B MAX DEPTH	UNCOATED ORDER #	TiAlN ORDER #
3/16" SHANK DIA., 2" OAL			
0.160	0.600	B160600R	B160600RA
0.160	0.750	B160750R	B160750RA
0.160	0.900	B160900R	B160900RA
0.160	1.000	B1601000R	B1601000RA
1/4" SHANK DIA., 2 1/2" OAL			
0.180	0.350	B180350R	B180350RA
0.180	0.500	B180500R	B180500RA
0.180	0.600	B180600R	B180600RA
0.180	0.750	B180750R	B180750RA
0.180	0.900	B180900R	B180900RA
0.180	1.000	B1801000R	B1801000RA
0.180	1.100	B1801100R	B1801100RA
1.180	1.250	B1801250R	B1801250RA
0.180	1.500	B1801500R	B1801500RA
0.200	0.400	B200400R	B200400RA
0.200	0.500	B200500R	B200500RA
0.200	0.600	B200600R	B200600RA
0.200	0.700	B200700R	B200700RA
0.200	0.800	B200800R	B200800RA
0.200	0.900	B200900R	B200900RA
0.200	1.000	B2001000R	B2001000RA
0.200	1.100	B2001100R	B2001100RA
0.200	1.200	B2001200R	B2001200RA
0.200	1.300	B2001300R	B2001300RA
5/16" SHANK DIA., 2 1/2" OAL			
0.230	0.400	B230400R	B230400RA
0.230	0.500	B230500R	B230500RA
0.230	0.600	B230600R	B230600RA
0.230	0.700	B230700R	B230700RA
0.230	0.800	B230800R	B230800RA
0.230	0.900	B230900R	B230900RA
0.230	1.000	B2301000R	B2301000RA
0.230	1.100	B2301100R	B2301100RA
0.230	1.150	B2301150R	B2301150RA
0.230	1.200	B2301200R	B2301200RA
0.230	1.250	B2301250R	B2301250RA
0.230	1.400	B2301400R	B2301400RA
0.230	1.500	B2301500R	B2301500RA
0.230	1.600	B2301600R	B2301600RA
0.290	0.500	B290500R	B290500RA
0.290	0.600	B290600R	B290600RA
0.290	0.750	B290750R	B290750RA
0.290	0.900	B290900R	B290900RA
0.290	1.000	B2901000R	B2901000RA
0.290	1.100	B2901100R	B2901100RA
0.290	1.250	B2901250R	B2901250RA
0.290	1.350	B2901350R	B2901350RA
0.290	1.500	B2901500R	B2901500RA
0.290	1.600	B2901600R	B2901600RA
0.290	1.750	B2901750R	B2901750RA

A MIN HOLE	B MAX DEPTH	UNCOATED ORDER #	TiAlN ORDER #
3/8" SHANK DIA., 2 1/2" OAL			
0.320	0.500	B320500R	B320500RA
0.320	0.600	B320600R	B320600RA
0.320	0.750	B320750R	B320750RA
0.320	0.900	B320900R	B320900RA
0.320	1.000	B3201000R	B3201000RA
0.320	1.100	B3201100R	B3201100RA
0.320	1.250	B3201250R	B3201250RA
0.320	1.500	B3201500R	B3201500RA
0.320	1.600	B3201600R	B3201600RA
0.320	1.800	B3201800R	B3201800RA
3/8" SHANK DIA., 4" OAL			
0.320	2.000	B3202000R	B3202000RA
0.320	2.500	B3202500R	B3202500RA
0.320	3.000	B3203000R	B3203000RA
3/8" SHANK DIA., 2 1/2" OAL			
0.360	0.500	B360500R	B360500RA
0.360	0.600	B360600R	B360600RA
0.360	0.750	B360750R	B360750RA
0.360	0.900	B360900R	B360900RA
0.360	1.000	B3601000R	B3601000RA
0.360	1.150	B3601150R	B3601150RA
0.360	1.250	B3601250R	B3601250RA
0.360	1.500	B3601500R	B3601500RA
0.360	1.600	B3601600R	B3601600RA
0.360	1.800	B3601800R	B3601800RA
3/8" SHANK DIA., 4" OAL			
0.360	2.000	B3602000R	B3602000RA
0.360	2.500	B3602500R	B3602500RA
0.360	3.000	B3603000R	B3603000RA
1/2" SHANK DIA., 3" OAL			
0.490	0.750	B490750R	B490750RA
0.490	1.000	B4901000R	B4901000RA
0.490	1.250	B4901250R	B4901250RA
0.490	1.500	B4901500R	B4901500RA
1/2" SHANK DIA., 4" OAL			
0.490	2.000	B4902000R	B4902000RA
0.490	2.500	B4902500R	B4902500RA
0.490	2.600	B4902600R	B4902600RA
0.490	2.750	B4902750R	B4902750RA
1/2" SHANK DIA., 6" OAL			
0.490	3.000	B4903000R	B4903000RA
0.490	3.500	B4903500R	B4903500RA
0.490	4.000	B4904000R	B4904000RA
0.490	4.500	B4904500R	B4904500RA

TOOL HOLDERS - SEE PAGE 15

Stocked: TiAlN = A; Optional: TiN = C, TiCN = N



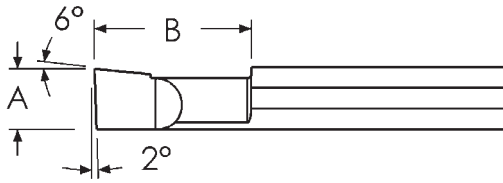
Scientific Cutting Tools, Inc.

(805) 584-9495
 (800) 383-2244

Fax: (805) 584-9629
 Fax: (888) 728-3295

Web: www.sct-usa.com
 Email: sales@sct-usa.com

BORING BARS - LEFT HAND - SOLID CARBIDE



A MIN HOLE	B MAX DEPTH	UNCOATED ORDER #	TiAlN ORDER #
1/8" SHANK DIA., 1 1/2" OAL			
0.050	0.150	LHB050150	LHB050150A
0.050	0.200	LHB050200	LHB050200A
0.050	0.300	LHB050300	LHB050300A
0.050	0.400	LHB050400	LHB050400A
0.060	0.150	LHB060150	LHB060150A
0.060	0.200	LHB060200	LHB060200A
0.060	0.300	LHB060300	LHB060300A
0.060	0.400	LHB060400	LHB060400A
0.060	0.500	LHB060500	LHB060500A
0.080	0.150	LHB080150	LHB080150A
0.080	0.200	LHB080200	LHB080200A
0.080	0.300	LHB080300	LHB080300A
0.080	0.400	LHB080400	LHB080400A
0.080	0.500	LHB080500	LHB080500A
0.080	0.600	LHB080600	LHB080600A
0.100	0.150	LHB100150	LHB100150A
0.100	0.200	LHB100200	LHB100200A
0.100	0.300	LHB100300	LHB100300A
0.100	0.400	LHB100400	LHB100400A
0.100	0.500	LHB100500	LHB100500A
0.100	0.600	LHB100600	LHB100600A
0.100	0.700	LHB100700	LHB100700A
0.110	0.150	LHB110150	LHB110150A
0.110	0.200	LHB110200	LHB110200A
0.110	0.300	LHB110300	LHB110300A
0.110	0.400	LHB110400	LHB110400A
0.110	0.500	LHB110500	LHB110500A
0.110	0.600	LHB110600	LHB110600A
0.110	0.700	LHB110700	LHB110700A
3/16" SHANK DIA., 2" OAL			
0.120	0.250	LHB120250	LHB120250A
0.120	0.350	LHB120350	LHB120350A
0.120	0.500	LHB120500	LHB120500A
0.120	0.600	LHB120600	LHB120600A
0.120	0.700	LHB120700	LHB120700A
0.120	0.800	LHB120800	LHB120800A
0.140	0.250	LHB140250	LHB140250A
0.140	0.400	LHB140400	LHB140400A
0.140	0.500	LHB140500	LHB140500A
0.140	0.600	LHB140600	LHB140600A
0.140	0.700	LHB140700	LHB140700A
0.140	0.750	LHB140750	LHB140750A
0.140	0.800	LHB140800	LHB140800A
0.160	0.250	LHB160250	LHB160250A
0.160	0.400	LHB160400	LHB160400A
0.160	0.500	LHB160500	LHB160500A

A MIN HOLE	B MAX DEPTH	UNCOATED ORDER #	TiAlN ORDER #
3/16" SHANK DIA., 2" OAL			
0.160	0.600	LHB160600	LHB160600A
0.160	0.750	LHB160750	LHB160750A
0.160	0.900	LHB160900	LHB160900A
0.160	1.000	LHB1601000	LHB1601000A
1/4" SHANK DIA., 2 1/2" OAL			
0.180	0.350	LHB180350	LHB180350A
0.180	0.500	LHB180500	LHB180500A
0.180	0.600	LHB180600	LHB180600A
0.180	0.750	LHB180750	LHB180750A
0.180	0.900	LHB180900	LHB180900A
0.180	1.000	LHB1801000	LHB1801000A
0.180	1.100	LHB1801100	LHB1801100A
0.200	0.400	LHB200400	LHB200400A
0.200	0.500	LHB200500	LHB200500A
0.200	0.600	LHB200600	LHB200600A
0.200	0.700	LHB200700	LHB200700A
0.200	0.800	LHB200800	LHB200800A
0.200	0.900	LHB200900	LHB200900A
0.200	1.000	LHB2001000	LHB2001000A
0.200	1.100	LHB2001100	LHB2001100A
0.200	1.200	LHB2001200	LHB2001200A
0.200	1.300	LHB2001300	LHB2001300A
5/16" SHANK DIA., 2 1/2" OAL			
0.230	0.400	LHB230400	LHB230400A
0.230	0.500	LHB230500	LHB230500A
0.230	0.600	LHB230600	LHB230600A
0.230	0.700	LHB230700	LHB230700A
0.230	0.800	LHB230800	LHB230800A
0.230	0.900	LHB230900	LHB230900A
0.230	1.000	LHB2301000	LHB2301000A
0.230	1.150	LHB2301150	LHB2301150A
0.230	1.200	LHB2301200	LHB2301200A
0.230	1.250	LHB2301250	LHB2301250A
0.230	1.400	LHB2301400	LHB2301400A
0.230	1.500	LHB2301500	LHB2301500A
0.230	1.600	LHB2301600	LHB2301600A
0.290	0.500	LHB290500	LHB290500A
0.290	0.600	LHB290600	LHB290600A
0.290	0.750	LHB290750	LHB290750A
0.290	0.900	LHB290900	LHB290900A
0.290	1.000	LHB2901000	LHB2901000A
0.290	1.100	LHB2901100	LHB2901100A
0.290	1.250	LHB2901250	LHB2901250A
0.290	1.350	LHB2901350	LHB2901350A
0.290	1.500	LHB2901500	LHB2901500A
0.290	1.600	LHB2901600	LHB2901600A
0.290	1.750	LHB2901750	LHB2901750A

A MIN HOLE	B MAX DEPTH	UNCOATED ORDER #	TiAlN ORDER #
3/8" SHANK DIA., 2 1/2" OAL			
0.320	0.500	LHB320500	LHB320500A
0.320	0.600	LHB320600	LHB320600A
0.320	0.750	LHB320750	LHB320750A
0.320	0.900	LHB320900	LHB320900A
0.320	1.000	LHB3201000	LHB3201000A
0.320	1.100	LHB3201100	LHB3201100A
0.320	1.250	LHB3201250	LHB3201250A
0.320	1.500	LHB3201500	LHB3201500A
0.320	1.600	LHB3201600	LHB3201600A
0.320	1.800	LHB3201800	LHB3201800A
3/8" SHANK DIA., 4" OAL			
0.320	2.000	LHB3202000	LHB3202000A
0.320	2.500	LHB3202500	LHB3202500A
0.320	3.000	LHB3203000	LHB3203000A
3/8" SHANK DIA., 2 1/2" OAL			
0.360	0.500	LHB360500	LHB360500A
0.360	0.600	LHB360600	LHB360600A
0.360	0.750	LHB360750	LHB360750A
0.360	0.900	LHB360900	LHB360900A
0.360	1.000	LHB3601000	LHB3601000A
0.360	1.150	LHB3601150	LHB3601150A
0.360	1.250	LHB3601250	LHB3601250A
0.360	1.500	LHB3601500	LHB3601500A
0.360	1.600	LHB3601600	LHB3601600A
0.360	1.800	LHB3601800	LHB3601800A
3/8" SHANK DIA., 4" OAL			
0.360	2.000	LHB3602000	LHB3602000A
0.360	2.500	LHB3602500	LHB3602500A
0.360	3.000	LHB3603000	LHB3603000A
1/2" SHANK DIA., 3" OAL			
0.490	0.750	LHB490750	LHB490750A
0.490	1.000	LHB4901000	LHB4901000A
0.490	1.250	LHB4901250	LHB4901250A
0.490	1.500	LHB4901500	LHB4901500A
1/2" SHANK DIA., 4" OAL			
0.490	2.000	LHB4902000	LHB4902000A
0.490	2.500	LHB4902500	LHB4902500A
0.490	2.600	LHB4902600	LHB4902600A
0.490	2.750	LHB4902750	LHB4902750A
1/2" SHANK DIA., 6" OAL			
0.490	3.000	LHB4903000	LHB4903000A
0.490	3.500	LHB4903500	LHB4903500A
0.490	4.000	LHB4904000	LHB4904000A
0.490	4.500	LHB4904500	LHB4904500A

TOOL HOLDERS - SEE PAGE 15

Stocked: TiAlN = A; Optional: TiN = C, TiCN = N

Scientific Cutting Tools, Inc.

(805) 584-9495
(800) 383-2244

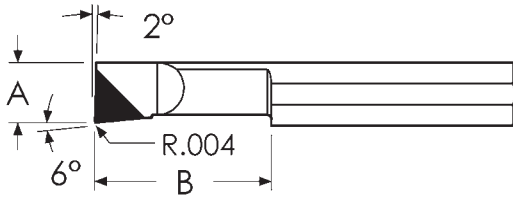
Fax: (805) 584-9629
Fax: (888) 728-3295

Web: www.sct-usa.com
Email: sales@sct-usa.com



SINGLE POINT TOOLS

BORING BARS - CBN - PCD - DIAMOND TIPPED



- PCD for abrasive non-ferrous materials
- CBN for hard ferrous metal - 45RC plus
- Solid Carbide for maximum rigidity
- For non-interrupted cuts only
- Faster speeds and feeds
- For tighter tolerances

PCD tipped boring bars provide excellent tool life for abrasive, non-ferrous metals, such as silicon aluminum, ceramics, and composites.

CBN tipped boring bars provide excellent tool life for abrasive cast iron and super alloys. They excel on ferrous metals over 45RC.

Both PCD and CBN provide longer tool life, higher machining feeds and speeds, better quality finishes and tighter tolerances.

SINGLE POINT TOOLS

A MIN HOLE	B MAX DEPTH	PCD ORDER #	CBN ORDER #
3/16" SHANK DIA., 2" OAL			
0.120	0.250	PCD-B120250	CBN-B120250
0.120	0.350	PCD-B120350	CBN-B120350
0.120	0.500	PCD-B120500	CBN-B120500
0.120	0.600	PCD-B120600	CBN-B120600
0.120	0.700	PCD-B120700	CBN-B120700
0.120	0.800	PCD-B120800	CBN-B120800
0.140	0.250	PCD-B140250	CBN-B140250
0.140	0.400	PCD-B140400	CBN-B140400
0.140	0.500	PCD-B140500	CBN-B140500
0.140	0.600	PCD-B140600	CBN-B140600
0.140	0.700	PCD-B140700	CBN-B140700
0.140	0.750	PCD-B140750	CBN-B140750
0.140	0.800	PCD-B140800	CBN-B140800
0.160	0.250	PCD-B160250	CBN-B160250
0.160	0.400	PCD-B160400	CBN-B160400
0.160	0.500	PCD-B160500	CBN-B160500
0.160	0.600	PCD-B160600	CBN-B160600
0.160	0.750	PCD-B160750	CBN-B160750
0.160	0.900	PCD-B160900	CBN-B160900
0.160	1.000	PCD-B1601000	CBN-B1601000
1/4" SHANK DIA., 2 1/2" OAL			
0.180	0.350	PCD-B180350	CBN-B180350
0.180	0.500	PCD-B180500	CBN-B180500
0.180	0.600	PCD-B180600	CBN-B180600
0.180	0.750	PCD-B180750	CBN-B180750
0.180	0.900	PCD-B180900	CBN-B180900
0.180	1.000	PCD-B1801000	CBN-B1801000
0.180	1.100	PCD-B1801100	CBN-B1801100
0.200	0.400	PCD-B200400	CBN-B200400
0.200	0.500	PCD-B200500	CBN-B200500
0.200	0.600	PCD-B200600	CBN-B200600
0.200	0.700	PCD-B200700	CBN-B200700

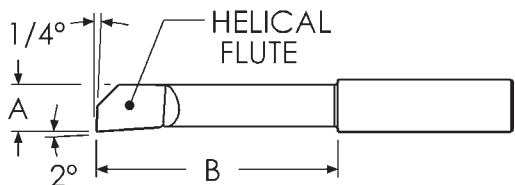
A MIN HOLE	B MAX DEPTH	PCD ORDER #	CBN ORDER #
1/4" SHANK DIA., 2 1/2" OAL			
0.200	0.800	PCD-B200800	CBN-B200800
0.200	0.900	PCD-B200900	CBN-B200900
0.200	1.000	PCD-B2001000	CBN-B2001000
0.200	1.100	PCD-B2001100	CBN-B2001100
0.200	1.200	PCD-B2001200	CBN-B2001200
0.200	1.300	PCD-B2001300	CBN-B2001300
5/16" SHANK DIA., 2 1/2" OAL			
0.230	0.400	PCD-B230400	CBN-B230400
0.230	0.500	PCD-B230500	CBN-B230500
0.230	0.600	PCD-B230600	CBN-B230600
0.230	0.700	PCD-B230700	CBN-B230700
0.230	0.800	PCD-B230800	CBN-B230800
0.230	0.900	PCD-B230900	CBN-B230900
0.230	1.000	PCD-B2301000	CBN-B2301000
0.230	1.150	PCD-B2301150	CBN-B2301150
0.230	1.200	PCD-B2301200	CBN-B2301200
0.230	1.250	PCD-B2301250	CBN-B2301250
0.230	1.400	PCD-B2301400	CBN-B2301400
0.230	1.500	PCD-B2301500	CBN-B2301500
0.230	1.600	PCD-B2301600	CBN-B2301600
0.290	0.500	PCD-B290500	CBN-B290500
0.290	0.600	PCD-B290600	CBN-B290600
0.290	0.750	PCD-B290750	CBN-B290750
0.290	0.900	PCD-B290900	CBN-B290900
0.290	1.000	PCD-B2901000	CBN-B2901000
0.290	1.100	PCD-B2901100	CBN-B2901100
0.290	1.250	PCD-B2901250	CBN-B2901250
0.290	1.350	PCD-B2901350	CBN-B2901350
0.290	1.500	PCD-B2901500	CBN-B2901500
0.290	1.600	PCD-B2901600	CBN-B2901600
0.290	1.750	PCD-B2901750	CBN-B2901750

A MIN HOLE	B MAX DEPTH	PCD ORDER #	CBN ORDER #
3/8" SHANK DIA., 2 1/2" OAL			
0.320	0.500	PCD-B320500	CBN-B320500
0.320	0.600	PCD-B320600	CBN-B320600
0.320	0.750	PCD-B320750	CBN-B320750
0.320	0.900	PCD-B320900	CBN-B320900
0.320	1.000	PCD-B3201000	CBN-B3201000
0.320	1.100	PCD-B3201100	CBN-B3201100
0.320	1.250	PCD-B3201250	CBN-B3201250
0.320	1.500	PCD-B3201500	CBN-B3201500
0.320	1.600	PCD-B3201600	CBN-B3201600
0.320	1.800	PCD-B3201800	CBN-B3201800
3/8" SHANK DIA., 4" OAL			
0.320	2.000	PCD-B3202000	CBN-B3202000
0.320	2.500	PCD-B3202500	CBN-B3202500
0.320	3.000	PCD-B3203000	CBN-B3203000
3/8" SHANK DIA., 2 1/2" OAL			
0.360	0.500	PCD-B360500	CBN-B360500
0.360	0.600	PCD-B360600	CBN-B360600
0.360	0.750	PCD-B360750	CBN-B360750
0.360	0.900	PCD-B360900	CBN-B360900
0.360	1.000	PCD-B3601000	CBN-B3601000
0.360	1.150	PCD-B3601150	CBN-B3601150
0.360	1.250	PCD-B3601250	CBN-B3601250
0.360	1.500	PCD-B3601500	CBN-B3601500
0.360	1.600	PCD-B3601600	CBN-B3601600
0.360	1.800	PCD-B3601800	CBN-B3601800
3/8" SHANK DIA., 4" OAL			
0.360	2.000	PCD-B3602000	CBN-B3602000
0.360	2.500	PCD-B3602500	CBN-B3602500
0.360	3.000	PCD-B3603000	CBN-B3603000

TOOL HOLDERS - SEE PAGE 15



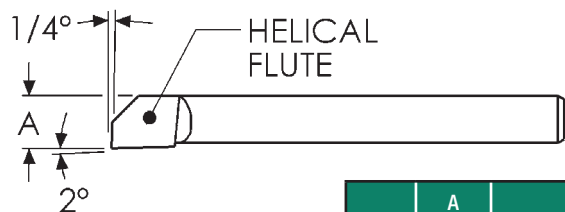
BORING BARS - HELICAL - SOLID CARBIDE



Helical Back Rake

OAL	A MIN HOLE	B MAX DEPTH	WITHOUT FLAT		WITH FLAT	
			UNCOATED ORDER #	TiALN ORDER #	UNCOATED ORDER #	TiALN ORDER #
1/8" SHANK DIA.						
1.50	0.025	0.093	HB25	HB25A	HB25F	HB25FA
1.50	0.027	0.125	HB27	HB27A	HB27F	HB27FA
1.50	0.031	0.156	HB31	HB31A	HB31F	HB31FA
1.50	0.031	0.187	HB31L	HB31LA	HB31LF	HB31LFA
1.50	0.036	0.156	HB36	HB36A	HB36F	HB36FA
1.50	0.036	0.250	HB36L	HB36LA	HB36LF	HB36LFA
1.50	0.042	0.250	HB42	HB42A	HB42F	HB42FA
1.50	0.042	0.312	HB42L	HB42LA	HB42LF	HB42LFA
1.50	0.052	0.312	HB52	HB52A	HB52F	HB52FA
1.50	0.057	0.312	HB57	HB57A	HB57F	HB57FA
1.50	0.060	0.375	HB60	HB60A	HB60F	HB60FA
1.50	0.060	0.500	HB60L	HB60LA	HB60LF	HB60LFA
1.50	0.070	0.437	HB70	HB70A	HB70F	HB70FA
1.50	0.080	0.500	HB80	HB80A	HB80F	HB80FA
1.50	0.085	0.500	HB85	HB85A	HB85F	HB85FA
1.50	0.090	0.500	HB90	HB90A	HB90F	HB90FA
1.50	0.090	0.625	HB90L	HB90LA	HB90LF	HB90LFA
1.50	0.100	0.562	HB100	HB100A	HB100F	HB100FA
2.00	0.100	0.625	HB100L	HB100LA	HB100LF	HB100LFA
1.50	0.110	0.562	HB110	HB110A	HB110F	HB110FA
2.00	0.110	0.625	HB110L	HB110LA	HB110LF	HB110LFA
1.50	0.120	0.625	HB120	HB120A	HB120F	HB120FA
2.00	0.120	0.625	HB120L	HB120LA	HB120LF	HB120LFA

TOOL HOLDERS - SEE PAGE 15



OAL	A MIN HOLE	SHANK DIA.	UNCOATED ORDER #	TiALN ORDER #
1.25	0.135	0.109	HB135	HB135A
1.25	0.150	0.125	HB150	HB150A
2.25	0.150	0.125	HB150L	HB150LA
1.25	0.180	0.156	HB180	HB180A
1.50	0.180	0.156	HB180L	HB180LA
3.00	0.180	0.156	HB180EL	HB180ELA
1.50	0.210	0.187	HB210	HB210A
3.00	0.210	0.187	HB210L	HB210LA
1.50	0.240	0.218	HB240	HB240A
3.00	0.240	0.218	HB240L	HB240LA
2.50	0.300	0.250	HB300	HB300A
3.50	0.300	0.250	HB300L	HB300LA
3.00	0.360	0.312	HB360	HB360A
4.25	0.360	0.312	HB360L	HB360LA
3.00	0.480	0.437	HB480	HB480A
5.25	0.480	0.437	HB480L	HB480LA

Stocked: TiALN = A; Optional: TiN = C, TiCN = N

SINGLE POINT TOOLS

Scientific Cutting Tools, Inc.

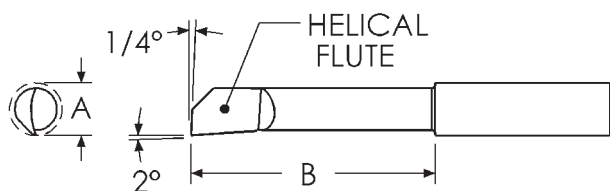
(805) 584-9495
(800) 383-2244

Fax: (805) 584-9629
Fax: (888) 728-3295

Web: www.sct-usa.com
Email: sales@sct-usa.com



BORING BARS - HELICAL - SOLID CARBIDE



“A” minimum bore diameter refers to the size of the hole that is produced when the tools are rotated on centerline. These tools are designed to be used for both mill and lathe applications.

A MIN BORE	B MAX DEPTH	UNCOATED ORDER #	TiALN ORDER #
1/8" SHANK DIA., 1 1/2" OAL			
0.020	0.062	HB020062	HB020062A
0.025	0.062	HB025062	HB025062A
0.025	0.125	HB025125	HB025125A
0.030	0.125	HB030125	HB030125A
0.030	0.187	HB030187	HB030187A
0.035	0.125	HB035125	HB035125A
0.035	0.187	HB035187	HB035187A
0.040	0.187	HB040187	HB040187A
0.040	0.250	HB040250	HB040250A
0.050	0.312	HB050312	HB050312A
0.060	0.375	HB060375	HB060375A
0.070	0.437	HB070437	HB070437A
0.080	0.500	HB080500	HB080500A
0.090	0.500	HB090500	HB090500A
0.100	0.562	HB100562	HB100562A
0.120	0.625	HB120625	HB120625A
0.120	1.000	HB1201000	HB1201000A
3/16" SHANK DIA., 2" OAL			
0.135	0.750	HB135750	HB135750A
0.135	1.000	HB1351000	HB1351000A
0.150	1.000	HB1501000	HB1501000A
0.150	1.250	HB1501250	HB1501250A
0.180	1.000	HB1801000	HB1801000A
0.180	1.250	HB1801250	HB1801250A
0.180	1.500	HB1801500	HB1801500A

Stocked: TiALN = A; Optional: TiN = C, TiCN = N

A MIN BORE	B MAX DEPTH	UNCOATED ORDER #	TiALN ORDER #
1/4" SHANK DIA., 2 1/2" OAL			
0.210	1.000	HB2101000	HB2101000A
0.210	1.250	HB2101250	HB2101250A
0.210	1.500	HB2101500	HB2101500A
0.240	1.000	HB2401000	HB2401000A
0.240	1.500	HB2401500	HB2401500A
0.240	1.750	HB2401750	HB2401750A
5/16" SHANK DIA., 2 1/2" OAL			
0.300	1.000	HB3001000	HB3001000A
0.300	1.500	HB3001500	HB3001500A
0.300	1.750	HB3001750	HB3001750A
3/8" SHANK DIA., 2 1/2" OAL			
0.360	1.000	HB3601000	HB3601000A
0.360	1.500	HB3601500	HB3601500A
0.360	1.750	HB3601750	HB3601750A
3/8" SHANK DIA., 4" OAL			
0.360	2.000	HB3602000	HB3602000A
0.360	2.250	HB3602250	HB3602250A
0.360	2.500	HB3602500	HB3602500A
1/2" SHANK DIA., 3" OAL			
0.480	1.500	HB4801500	HB4801500A
0.480	2.000	HB4802000	HB4802000A
1/2" SHANK DIA., 4" OAL			
0.480	2.500	HB4802500	HB4802500A
0.480	3.000	HB4803000	HB4803000A
1/2" SHANK DIA., 6" OAL			
0.480	3.500	HB4803500	HB4803500A
0.480	4.000	HB4804000	HB4804000A
0.480	4.500	HB4804500	HB4804500A

TOOL HOLDERS - SEE PAGE 15

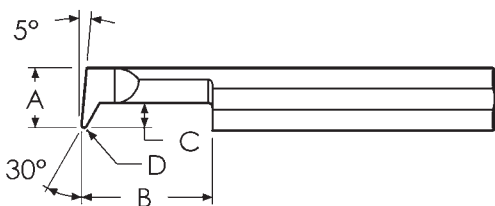


(805) 584-9495
(800) 383-2244

Fax: (805) 584-9629
Fax: (888) 728-3295

Web: www.sct-usa.com
Email: sales@sct-usa.com

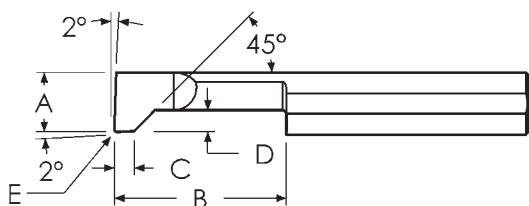
PROFILE BORING BARS - SOLID CARBIDE



A MIN HOLE	B MAX DEPTH	C OFF SET	D TOOL RADIUS	UNCOATED ORDER #	TiALN ORDER #
1/8" SHANK DIA., 1 1/2" OAL					
0.090	0.200	0.040	0.005	PB090200	PB090200A
0.090	0.300	0.040	0.005	PB090300	PB090300A
0.090	0.400	0.040	0.005	PB090400	PB090400A
0.120	0.250	0.050	0.007	PB120250	PB120250A
0.120	0.500	0.050	0.007	PB120500	PB120500A
0.120	0.750	0.050	0.007	PB120750	PB120750A
3/16" SHANK DIA., 2" OAL					
0.180	0.500	0.080	0.010	PB180500	PB180500A
0.180	0.750	0.080	0.010	PB180750	PB180750A
0.180	1.000	0.080	0.010	PB1801000	PB1801000A
1/4" SHANK DIA., 2 1/2" OAL					
0.230	0.500	0.090	0.010	PB230500	PB230500A
0.230	0.750	0.090	0.010	PB230750	PB230750A
0.230	1.000	0.090	0.010	PB2301000	PB2301000A

A MIN HOLE	B MAX DEPTH	C OFF SET	D TOOL RADIUS	UNCOATED ORDER #	TiALN ORDER #
5/16" SHANK DIA., 2 1/2" OAL					
0.290	0.500	0.110	0.015	PB290500	PB290500A
0.290	0.750	0.110	0.015	PB290750	PB290750A
0.290	1.000	0.110	0.015	PB2901000	PB2901000A
3/8" SHANK DIA., 2 1/2" OAL					
0.360	0.500	0.140	0.015	PB360500	PB360500A
0.360	0.750	0.140	0.015	PB360750	PB360750A
0.360	1.000	0.140	0.015	PB3601000	PB3601000A
0.360	1.250	0.140	0.015	PB3601250	PB3601250A
1/2" SHANK DIA., 3" OAL					
0.490	0.500	0.180	0.015	PB490500	PB490500A
0.490	0.750	0.180	0.015	PB490750	PB490750A
0.490	1.000	0.180	0.015	PB4901000	PB4901000A
0.490	1.250	0.180	0.015	PB4901250	PB4901250A

BACK CHAMFER BORING BARS - SOLID CARBIDE



A MIN HOLE	B MAX DEPTH	C CUT WIDTH	D OFF SET	E TOOL RADIUS	UNCOATED ORDER #	TiALN ORDER #
1/8" SHANK DIA., 1 1/2" OAL						
0.090	0.300	0.040	0.035	0.010	BC090300	BC090300A
0.090	0.400	0.040	0.035	0.010	BC090400	BC090400A
0.090	0.500	0.040	0.035	0.010	BC090500	BC090500A
0.120	0.400	0.050	0.045	0.015	BC120400	BC120400A
0.120	0.500	0.050	0.045	0.015	BC120500	BC120500A
0.120	0.600	0.050	0.045	0.015	BC120600	BC120600A
3/16" SHANK DIA., 2" OAL						
0.180	0.500	0.060	0.050	0.015	BC180500	BC180500A
0.180	0.650	0.060	0.050	0.015	BC180650	BC180650A
0.180	0.800	0.060	0.050	0.015	BC180800	BC180800A
1/4" SHANK DIA., 2 1/2" OAL						
0.230	0.500	0.080	0.060	0.015	BC230500	BC230500A
0.230	0.700	0.080	0.060	0.015	BC230700	BC230700A
0.230	0.900	0.080	0.060	0.015	BC230900	BC230900A

A MIN HOLE	B MAX DEPTH	C CUT WIDTH	D OFF SET	E TOOL RADIUS	UNCOATED ORDER #	TiALN ORDER #
5/16" SHANK DIA., 2 1/2" OAL						
0.290	0.700	0.080	0.080	0.020	BC290700	BC290700A
0.290	0.900	0.080	0.080	0.020	BC290900	BC290900A
0.290	1.100	0.080	0.080	0.020	BC2901100	BC2901100A
3/8" SHANK DIA., 2 1/2" OAL						
0.360	0.750	0.100	0.120	0.020	BC360750	BC360750A
0.360	1.000	0.100	0.120	0.020	BC3601000	BC3601000A
0.360	1.250	0.100	0.120	0.020	BC3601250	BC3601250A
1/2" SHANK DIA., 3" OAL						
0.490	1.000	0.110	0.130	0.030	BC4901000	BC4901000A
0.490	1.250	0.110	0.130	0.030	BC4901250	BC4901250A
0.490	1.500	0.110	0.130	0.030	BC4901500	BC4901500A

TOOL HOLDERS - SEE PAGE 15

Stocked: TiALN = A; Optional: TiN = C, TiCN = N

Scientific Cutting Tools, Inc.

(805) 584-9495
(800) 383-2244

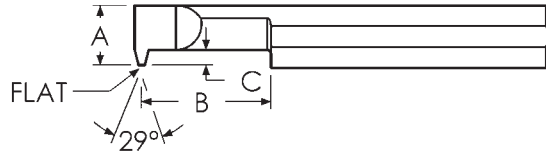
Fax: (805) 584-9629
Fax: (888) 728-3295

Web: www.sct-usa.com
Email: sales@sct-usa.com



SINGLE POINT TOOLS

ACME THREADING TOOLS - SOLID CARBIDE



STUB ACME

A MIN HOLE	B MAX DEPTH	C OFF SET	UNCOATED ORDER #	TiALN ORDER #
1/4" SHANK DIA., 2 1/2" OAL - *1/4-16SA - .024 FLAT				
0.180	0.350	0.045	SAT180350-16	SAT180350-16A
0.180	0.500	0.045	SAT180500-16	SAT180500-16A
0.180	0.750	0.045	SAT180750-16	SAT180750-16A
0.180	1.000	0.045	SAT1801000-16	SAT1801000-16A
5/16" SHANK DIA., 2 1/2" OAL - *5/16-14SA - .028 FLAT				
0.230	0.400	0.055	SAT230400-14	SAT230400-14A
0.230	0.600	0.055	SAT230600-14	SAT230600-14A
0.230	0.750	0.055	SAT230750-14	SAT230750-14A
0.230	1.000	0.055	SAT2301000-14	SAT2301000-14A
0.230	1.250	0.055	SAT2301250-14	SAT2301250-14A
5/16" SHANK DIA., 2 1/2" OAL - *3/8-12SA - .033 FLAT				
0.290	0.400	0.070	SAT290400-12	SAT290400-12A
0.290	0.600	0.070	SAT290600-12	SAT290600-12A
0.290	0.750	0.070	SAT290750-12	SAT290750-12A
0.290	1.000	0.070	SAT2901000-12	SAT2901000-12A
0.290	1.250	0.070	SAT2901250-12	SAT2901250-12A
3/8" SHANK DIA., 2 1/2" OAL - *1/2-10SA - .037 FLAT				
0.360	0.500	0.085	SAT360500-10	SAT360500-10A
0.360	0.750	0.085	SAT360750-10	SAT360750-10A
0.360	1.000	0.085	SAT3601000-10	SAT3601000-10A
0.360	1.250	0.085	SAT3601250-10	SAT3601250-10A
0.360	1.500	0.085	SAT3601500-10	SAT3601500-10A
1/2" SHANK DIA., 3" OAL - *5/8-8SA - .048 FLAT				
0.490	0.750	0.120	SAT490750-8	SAT490750-8A
0.490	1.000	0.120	SAT4901000-8	SAT4901000-8A
0.490	2.000	0.120	SAT4902000-8	SAT4902000-8A
1/2" SHANK DIA., 3" OAL - *3/4-6SA - .065 FLAT				
0.490	0.750	0.120	SAT490750-6	SAT490750-6A
0.490	1.000	0.120	SAT4901000-6	SAT4901000-6A
0.490	2.000	0.120	SAT4902000-6	SAT4902000-6A
1/2" SHANK DIA., 3" OAL - *1.0-5SA - .079 FLAT				
0.490	0.750	0.130	SAT490750-5	SAT490750-5A
0.490	1.000	0.130	SAT4901000-5	SAT4901000-5A
0.490	2.000	0.130	SAT4902000-5	SAT4902000-5A

Stocked: TiALN = A; Optional: TIN = C, TiCN = N

FULL ACME

A MIN HOLE	B MAX DEPTH	C OFF SET	UNCOATED ORDER #	TiALN ORDER #
1/4" SHANK DIA., 2 1/2" OAL - *1/4-16FA - .021 FLAT				
0.180	0.350	0.045	FAT180350-16	FAT180350-16A
0.180	0.500	0.045	FAT180500-16	FAT180500-16A
0.180	0.750	0.045	FAT180750-16	FAT180750-16A
0.180	1.000	0.045	FAT1801000-16	FAT1801000-16A
5/16" SHANK DIA., 2 1/2" OAL - *5/16-14FA - .024 FLAT				
0.230	0.400	0.055	FAT230400-14	FAT230400-14A
0.230	0.600	0.055	FAT230600-14	FAT230600-14A
0.230	0.750	0.055	FAT230750-14	FAT230750-14A
0.230	1.000	0.055	FAT2301000-14	FAT2301000-14A
0.230	1.250	0.055	FAT2301250-14	FAT2301250-14A
5/16" SHANK DIA., 2 1/2" OAL - *3/8-12FA - .028 FLAT				
0.290	0.400	0.070	FAT290400-12	FAT290400-12A
0.290	0.600	0.070	FAT290600-12	FAT290600-12A
0.290	0.750	0.070	FAT290750-12	FAT290750-12A
0.290	1.000	0.070	FAT2901000-12	FAT2901000-12A
0.290	1.250	0.070	FAT2901250-12	FAT2901250-12A
3/8" SHANK DIA., 2 1/2" OAL - *1/2-10FA - .032 FLAT				
0.360	0.500	0.085	FAT360500-10	FAT360500-10A
0.360	0.750	0.085	FAT360750-10	FAT360750-10A
0.360	1.000	0.085	FAT3601000-10	FAT3601000-10A
0.360	1.250	0.085	FAT3601250-10	FAT3601250-10A
0.360	1.500	0.085	FAT3601500-10	FAT3601500-10A
1/2" SHANK DIA., 3" OAL - *5/8-8FA - .041 FLAT				
0.490	0.750	0.120	FAT490750-8	FAT490750-8A
0.490	1.000	0.120	FAT4901000-8	FAT4901000-8A
0.490	2.000	0.120	FAT4902000-8	FAT4902000-8A
1/2" SHANK DIA., 3" OAL - *3/4-6FA - .057 FLAT				
0.490	0.750	0.120	FAT490750-6	FAT490750-6A
0.490	1.000	0.120	FAT4901000-6	FAT4901000-6A
0.490	2.000	0.120	FAT4902000-6	FAT4902000-6A
1/2" SHANK DIA., 3" OAL - *1.0-5FA - .069 FLAT				
0.490	0.750	0.130	FAT490750-5	FAT490750-5A
0.490	1.000	0.130	FAT4901000-5	FAT4901000-5A
0.490	2.000	0.130	FAT4902000-5	FAT4902000-5A

TOOL HOLDERS - SEE PAGE 15

* These tools can cut any larger size internal thread of the same pitch.

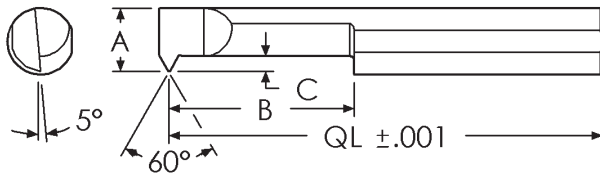


(805) 584-9495
(800) 383-2244

Fax: (805) 584-9629
Fax: (888) 728-3295

Web: www.sct-usa.com
Email: sales@sct-usa.com

THREADING TOOLS QUALIFIED - SOLID CARBIDE



A MIN HOLE	B MAX DEPTH	C MIN OFFSET	RECOM- MENDED TPI*	UNCOATED ORDER#	TiAlN ORDER #
1/8" SHANK DIA., 1 1/2" OAL					
0.060	0.150	0.020	40 to 80	TTQ060150	TTQ060150A
0.060	0.200	0.020	40 to 80	TTQ060200	TTQ060200A
0.060	0.250	0.020	40 to 80	TTQ060250	TTQ060250A
0.060	0.300	0.020	40 to 80	TTQ060300	TTQ060300A
0.062	0.150	0.020	40 to 56	TTQ062150	TTQ062150A
0.062	0.200	0.020	40 to 56	TTQ062200	TTQ062200A
0.062	0.250	0.020	40 to 56	TTQ062250	TTQ062250A
0.062	0.300	0.020	40 to 56	TTQ062300	TTQ062300A
0.075	0.200	0.020	36 to 72	TTQ075200	TTQ075200A
0.075	0.300	0.020	36 to 72	TTQ075300	TTQ075300A
0.075	0.400	0.020	36 to 72	TTQ075400	TTQ075400A
0.077	0.200	0.020	36 to 48	TTQ077200	TTQ077200A
0.077	0.300	0.020	36 to 48	TTQ077300	TTQ077300A
0.077	0.400	0.020	36 to 48	TTQ077400	TTQ077400A
0.090	0.200	0.025	32 to 64	TTQ090200	TTQ090200A
0.090	0.300	0.025	32 to 64	TTQ090300	TTQ090300A
0.090	0.400	0.025	32 to 64	TTQ090400	TTQ090400A
0.090	0.500	0.025	32 to 64	TTQ090500	TTQ090500A
0.092	0.200	0.025	32 to 48	TTQ092200	TTQ092200A
0.092	0.300	0.025	32 to 48	TTQ092300	TTQ092300A
0.092	0.400	0.025	32 to 48	TTQ092400	TTQ092400A
0.092	0.500	0.025	32 to 48	TTQ092500	TTQ092500A
3/16" SHANK DIA., 2" OAL					
0.120	0.250	0.030	24 to 56	TTQ120250	TTQ120250A
0.120	0.400	0.030	24 to 56	TTQ120400	TTQ120400A
0.120	0.600	0.030	24 to 56	TTQ120600	TTQ120600A
0.120	0.750	0.030	24 to 56	TTQ120750	TTQ120750A
0.122	0.250	0.030	24 to 32	TTQ122250	TTQ122250A
0.122	0.400	0.030	24 to 32	TTQ122400	TTQ122400A
0.122	0.600	0.030	24 to 32	TTQ122600	TTQ122600A
0.122	0.750	0.030	24 to 32	TTQ122750	TTQ122750A
0.150	0.350	0.035	20 to 56	TTQ150350	TTQ150350A
0.150	0.500	0.035	20 to 56	TTQ150500	TTQ150500A
0.150	0.750	0.035	20 to 56	TTQ150750	TTQ150750A
0.152	0.350	0.035	20 to 32	TTQ152350	TTQ152350A
0.152	0.500	0.035	20 to 32	TTQ152500	TTQ152500A
0.152	0.750	0.035	20 to 32	TTQ152750	TTQ152750A
1/4" SHANK DIA., 2 1/2" OAL					
0.180	0.350	0.040	18 to 56	TTQ180350	TTQ180350A
0.180	0.500	0.040	18 to 56	TTQ180500	TTQ180500A
0.180	0.750	0.040	18 to 56	TTQ180750	TTQ180750A
0.180	1.000	0.040	18 to 56	TTQ1801000	TTQ1801000A
0.182	0.350	0.040	18 to 32	TTQ182350	TTQ182350A
0.182	0.500	0.040	18 to 32	TTQ182500	TTQ182500A
0.182	0.750	0.040	18 to 32	TTQ182750	TTQ182750A
0.182	1.000	0.040	18 to 32	TTQ1821000	TTQ1821000A

A MIN HOLE	B MAX DEPTH	C MIN OFFSET	RECOM- MENDED TPI*	UNCOATED ORDER#	TiAlN ORDER #
1/4" SHANK DIA., 2 1/2" OAL					
0.200	0.400	0.045	16 to 40	TTQ200400	TTQ200400A
0.200	0.600	0.045	16 to 40	TTQ200600	TTQ200600A
0.200	0.800	0.045	16 to 40	TTQ200800	TTQ200800A
0.200	1.000	0.045	16 to 40	TTQ2001000	TTQ2001000A
0.202	0.400	0.045	16 to 28	TTQ202400	TTQ202400A
0.202	0.600	0.045	16 to 28	TTQ202600	TTQ202600A
0.202	0.800	0.045	16 to 28	TTQ202800	TTQ202800A
0.202	1.000	0.045	16 to 28	TTQ2021000	TTQ2021000A
5/16" SHANK DIA., 2 1/2" OAL					
0.230	0.400	0.055	14 to 40	TTQ230400	TTQ230400A
0.230	0.600	0.055	14 to 40	TTQ230600	TTQ230600A
0.230	0.750	0.055	14 to 40	TTQ230750	TTQ230750A
0.230	1.000	0.055	14 to 40	TTQ2301000	TTQ2301000A
0.230	1.250	0.055	14 to 40	TTQ2301250	TTQ2301250A
0.232	0.400	0.055	14 to 28	TTQ232400	TTQ232400A
0.232	0.600	0.055	14 to 28	TTQ232600	TTQ232600A
0.232	0.750	0.055	14 to 28	TTQ232750	TTQ232750A
0.232	1.000	0.055	14 to 28	TTQ2321000	TTQ2321000A
0.232	1.250	0.055	14 to 28	TTQ2321250	TTQ2321250A
0.290	0.500	0.070	12 to 40	TTQ290500	TTQ290500A
0.290	0.750	0.070	12 to 40	TTQ290750	TTQ290750A
0.290	1.000	0.070	12 to 40	TTQ2901000	TTQ2901000A
0.290	1.250	0.070	12 to 40	TTQ2901250	TTQ2901250A
0.290	1.500	0.070	12 to 40	TTQ2901500	TTQ2901500A
0.292	0.500	0.070	12 to 24	TTQ292500	TTQ292500A
0.292	0.750	0.070	12 to 24	TTQ292750	TTQ292750A
0.292	1.000	0.070	12 to 24	TTQ2921000	TTQ2921000A
0.292	1.250	0.070	12 to 24	TTQ2921250	TTQ2921250A
0.292	1.500	0.070	12 to 24	TTQ2921500	TTQ2921500A
3/8" SHANK DIA., 2 1/2" OAL					
0.320	0.500	0.075	10 to 32	TTQ320500	TTQ320500A
0.320	0.750	0.075	10 to 32	TTQ320750	TTQ320750A
0.320	1.000	0.075	10 to 32	TTQ3201000	TTQ3201000A
0.320	1.250	0.075	10 to 32	TTQ3201250	TTQ3201250A
0.320	1.500	0.075	10 to 32	TTQ3201500	TTQ3201500A
0.322	0.500	0.075	10 to 16	TTQ322500	TTQ322500A
0.322	0.750	0.075	10 to 16	TTQ322750	TTQ322750A
0.322	1.000	0.075	10 to 16	TTQ3221000	TTQ3221000A
0.322	1.250	0.075	10 to 16	TTQ3221250	TTQ3221250A
0.322	1.500	0.075	10 to 16	TTQ3221500	TTQ3221500A
0.360	0.500	0.080	8 to 24	TTQ360500	TTQ360500A
0.360	0.750	0.080	8 to 24	TTQ360750	TTQ360750A
0.360	1.000	0.080	8 to 24	TTQ3601000	TTQ3601000A
0.360	1.250	0.080	8 to 24	TTQ3601250	TTQ3601250A
0.360	1.500	0.080	8 to 24	TTQ3601500	TTQ3601500A
0.362	0.500	0.080	8 to 12	TTQ362500	TTQ362500A
0.362	0.750	0.080	8 to 12	TTQ362750	TTQ362750A
0.362	1.000	0.080	8 to 12	TTQ3621000	TTQ3621000A
0.362	1.250	0.080	8 to 12	TTQ3621250	TTQ3621250A
0.362	1.500	0.080	8 to 12	TTQ3621500	TTQ3621500A

SINGLE POINT TOOLS

Stocked: TiAlN = A; Optional: TiN = C, TiCN = N

TOOL HOLDERS - SEE PAGE 15

*TPI = Threads Per Inch

Scientific Cutting Tools, Inc.

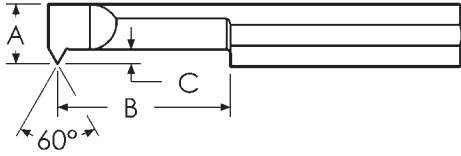
(805) 584-9495
(800) 383-2244

Fax: (805) 584-9629
Fax: (888) 728-3295

Web: www.sct-usa.com
Email: sales@sct-usa.com



THREADING TOOLS - SOLID CARBIDE



A MIN HOLE	B MAX DEPTH	C MIN OFFSET	RECOM- MENDED TPI*	UNCOATED ORDER #	TIALN ORDER #
1/8" SHANK DIA., 1 1/2" OAL					
0.040	0.080	0.013	56 to 80	TT040080	TT040080A
0.040	0.100	0.013	56 to 80	TT040100	TT040100A
0.040	0.130	0.013	56 to 80	TT040130	TT040130A
0.050	0.100	0.017	48 to 80	TT050100	TT050100A
0.050	0.150	0.017	48 to 80	TT050150	TT050150A
0.050	0.200	0.017	48 to 80	TT050200	TT050200A
0.060	0.150	0.020	40 to 80	TT060150	TT060150A
0.060	0.200	0.020	40 to 80	TT060200	TT060200A
0.060	0.250	0.020	40 to 80	TT060250	TT060250A
0.060	0.300	0.020	40 to 80	TT060300	TT060300A
0.075	0.200	0.020	36 to 72	TT075200	TT075200A
0.075	0.300	0.020	36 to 72	TT075300	TT075300A
0.075	0.400	0.020	36 to 72	TT075400	TT075400A
0.090	0.200	0.025	32 to 64	TT090200	TT090200A
0.090	0.300	0.025	32 to 64	TT090300	TT090300A
0.090	0.400	0.025	32 to 64	TT090400	TT090400A
0.090	0.500	0.025	32 to 64	TT090500	TT090500A
3/16" SHANK DIA., 2" OAL					
0.120	0.250	0.030	24 to 56	TT120250	TT120250A
0.120	0.400	0.030	24 to 56	TT120400	TT120400A
0.120	0.600	0.030	24 to 56	TT120600	TT120600A
0.120	0.750	0.030	24 to 56	TT120750	TT120750A
0.150	0.350	0.035	20 to 56	TT150350	TT150350A
0.150	0.500	0.035	20 to 56	TT150500	TT150500A
0.150	0.750	0.035	20 to 56	TT150750	TT150750A
1/4" SHANK DIA., 2 1/2" OAL					
0.180	0.350	0.040	18 to 56	TT180350	TT180350A
0.180	0.500	0.040	18 to 56	TT180500	TT180500A
0.180	0.750	0.040	18 to 56	TT180750	TT180750A
0.180	1.000	0.040	18 to 56	TT1801000	TT1801000A

Stocked: TiAlN = A; Optional: TiN = C, TiCN = N

A MIN HOLE	B MAX DEPTH	C MIN OFFSET	RECOM- MENDED TPI*	UNCOATED ORDER #	TIALN ORDER #
1/4" SHANK DIA., 2 1/2" OAL					
0.200	0.400	0.045	16 to 40	TT200400	TT200400A
0.200	0.600	0.045	16 to 40	TT200600	TT200600A
0.200	0.800	0.045	16 to 40	TT200800	TT200800A
0.200	1.000	0.045	16 to 40	TT2001000	TT2001000A
5/16" SHANK DIA., 2 1/2" OAL					
0.230	0.400	0.055	14 to 40	TT230400	TT230400A
0.230	0.600	0.055	14 to 40	TT230600	TT230600A
0.230	0.750	0.055	14 to 40	TT230750	TT230750A
0.230	1.000	0.055	14 to 40	TT2301000	TT2301000A
0.230	1.250	0.055	14 to 40	TT2301250	TT2301250A
0.290	0.500	0.070	12 to 40	TT290500	TT290500A
0.290	0.750	0.070	12 to 40	TT290750	TT290750A
0.290	1.000	0.070	12 to 40	TT2901000	TT2901000A
0.290	1.250	0.070	12 to 40	TT2901250	TT2901250A
0.290	1.500	0.070	12 to 40	TT2901500	TT2901500A
3/8" SHANK DIA., 2 1/2" OAL					
0.320	0.500	0.075	10 to 32	TT320500	TT320500A
0.320	0.750	0.075	10 to 32	TT320750	TT320750A
0.320	1.000	0.075	10 to 32	TT3201000	TT3201000A
0.320	1.250	0.075	10 to 32	TT3201250	TT3201250A
0.320	1.500	0.075	10 to 32	TT3201500	TT3201500A
0.360	0.500	0.080	8 to 32	TT360500	TT360500A
0.360	0.750	0.080	8 to 32	TT360750	TT360750A
0.360	1.000	0.080	8 to 32	TT3601000	TT3601000A
0.360	1.250	0.080	8 to 32	TT3601250	TT3601250A
0.360	1.800	0.080	8 to 32	TT3601800	TT3601800A
1/2" SHANK DIA., 3" OAL					
0.490	0.750	0.120	8 to 32	TT490750	TT490750A
0.490	1.500	0.120	8 to 32	TT4901500	TT4901500A
0.490	2.000	0.120	8 to 32	TT4902000	TT4902000A

TOOL HOLDERS - SEE PAGE 15

Left Hand Style Available in All Sizes.

To Order Left Hand Style, Start the Item Number with "LH."

*TPI = Threads Per Inch

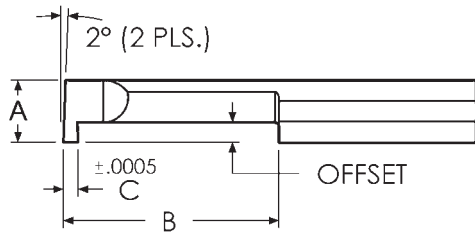


(805) 584-9495
(800) 383-2244

Fax: (805) 584-9629
Fax: (888) 728-3295

Web: www.sct-usa.com
Email: sales@sct-usa.com

GROOVE TOOLS – RETAINING RING – SOLID CARBIDE



A MIN HOLE	B MAX DEPTH	C TOOL WIDTH	UNCOATED ORDER #	TiAlN ORDER #
1/8" SHANK DIA., .020 OFFSET, 1 1/2" OAL				
0.060	0.187	0.0320	GT031-3	GT031-3A
0.060	0.250	0.0320	GT031-4	GT031-4A
0.060	0.375	0.0320	GT031-6	GT031-6A
1/8" SHANK DIA., .030 OFFSET, 1 1/2" OAL				
0.090	0.250	0.0460	GT045-4	GT045-4A
0.090	0.375	0.0460	GT045-6	GT045-6A
0.090	0.500	0.0460	GT045-8	GT045-8A
1/8" SHANK DIA., .040 OFFSET, 1 1/2" OAL				
0.120	0.250	0.0620	GT061-4	GT061-4A
0.120	0.375	0.0620	GT061-6	GT061-6A
0.120	0.500	0.0620	GT061-8	GT061-8A
0.120	0.625	0.0620	GT061-10	GT061-10A
3/16" SHANK DIA., .050 OFFSET, 2" OAL				
0.187	0.250	0.0175	GT017K-4	GT017K-4A
0.187	0.375	0.0175	GT017K-6	GT017K-6A
0.187	0.500	0.0175	GT017K-8	GT017K-8A
0.187	0.625	0.0175	GT017K-10	GT017K-10A
0.187	0.250	0.0255	GT025K-4	GT025K-4A
0.187	0.375	0.0255	GT025K-6	GT025K-6A
0.187	0.500	0.0255	GT025K-8	GT025K-8A
0.187	0.625	0.0255	GT025K-10	GT025K-10A
0.187	0.250	0.0305	GT030K-4	GT030K-4A
0.187	0.375	0.0305	GT030K-6	GT030K-6A
0.187	0.500	0.0305	GT030K-8	GT030K-8A
0.187	0.625	0.0305	GT030K-10	GT030K-10A
0.187	0.250	0.0630	GT062K-4	GT062K-4A
0.187	0.375	0.0630	GT062K-6	GT062K-6A
0.187	0.500	0.0630	GT062K-8	GT062K-8A
0.187	0.625	0.0630	GT062K-10	GT062K-10A
1/4" SHANK DIA., .060 OFFSET, 2 1/2" OAL				
0.250	0.250	0.0175	GT017Q-4	GT017Q-4A
0.250	0.375	0.0175	GT017Q-6	GT017Q-6A
0.250	0.500	0.0175	GT017Q-8	GT017Q-8A
0.250	0.625	0.0175	GT017Q-10	GT017Q-10A
0.250	0.250	0.0255	GT025Q-4	GT025Q-4A
0.250	0.375	0.0255	GT025Q-6	GT025Q-6A
0.250	0.500	0.0255	GT025Q-8	GT025Q-8A
0.250	0.625	0.0255	GT025Q-10	GT025Q-10A
0.250	0.250	0.0305	GT030Q-4	GT030Q-4A
0.250	0.375	0.0305	GT030Q-6	GT030Q-6A
0.250	0.500	0.0305	GT030Q-8	GT030Q-8A
0.250	0.625	0.0305	GT030Q-10	GT030Q-10A
0.250	0.250	0.0630	GT062Q-4	GT062Q-4A
0.250	0.375	0.0630	GT062Q-6	GT062Q-6A
0.250	0.500	0.0630	GT062Q-8	GT062Q-8A
0.250	0.625	0.0630	GT062Q-10	GT062Q-10A
0.250	0.250	0.0930	GT092Q-4	GT092Q-4A
0.250	0.375	0.0930	GT092Q-6	GT092Q-6A
0.250	0.500	0.0930	GT092Q-8	GT092Q-8A
0.250	0.625	0.0930	GT092Q-10	GT092Q-10A

A MIN HOLE	B MAX DEPTH	C TOOL WIDTH	UNCOATED ORDER #	TiAlN ORDER #
5/16" SHANK DIA., .110 OFFSET, 2 1/2" OAL				
0.312	0.250	0.0335	GT033-4	GT033-4A
0.312	0.375	0.0335	GT033-6	GT033-6A
0.312	0.500	0.0335	GT033-8	GT033-8A
0.312	0.750	0.0335	GT033-12	GT033-12A
0.312	0.250	0.0385	GT038-4	GT038-4A
0.312	0.375	0.0385	GT038-6	GT038-6A
0.312	0.500	0.0385	GT038-8	GT038-8A
0.312	0.750	0.0385	GT038-12	GT038-12A
0.312	0.375	0.0630	GT063-6	GT063-6A
0.312	0.500	0.0630	GT063-8	GT063-8A
0.312	0.750	0.0630	GT063-12	GT063-12A
0.312	1.000	0.0630	GT063-16	GT063-16A
0.312	0.375	0.1250	GT124-6	GT124-6A
0.312	0.500	0.1250	GT124-8	GT124-8A
0.312	0.750	0.1250	GT124-12	GT124-12A
0.312	1.000	0.1250	GT124-16	GT124-16A
3/8" SHANK DIA., .110 OFFSET, 2 1/2" OAL				
0.375	0.250	0.0400	GT039-4	GT039-4A
0.375	0.375	0.0400	GT039-6	GT039-6A
0.375	0.500	0.0400	GT039-8	GT039-8A
0.375	0.750	0.0400	GT039-12	GT039-12A
0.375	1.000	0.0400	GT039-16	GT039-16A
0.375	1.250	0.0400	GT039-20	GT039-20A
0.375	0.250	0.0470	GT046-4	GT046-4A
0.375	0.375	0.0470	GT046-6	GT046-6A
0.375	0.500	0.0470	GT046-8	GT046-8A
0.375	0.750	0.0470	GT046-12	GT046-12A
0.375	1.000	0.0470	GT046-16	GT046-16A
0.375	1.250	0.0470	GT046-20	GT046-20A
0.375	0.250	0.0560	GT055-4	GT055-4A
0.375	0.375	0.0560	GT055-6	GT055-6A
0.375	0.500	0.0560	GT055-8	GT055-8A
0.375	0.750	0.0560	GT055-12	GT055-12A
0.375	1.000	0.0560	GT055-16	GT055-16A
0.375	1.250	0.0560	GT055-20	GT055-20A
0.375	0.250	0.0630	GT062-4	GT062-4A
0.375	0.375	0.0630	GT062-6	GT062-6A
0.375	0.500	0.0630	GT062-8	GT062-8A
0.375	0.750	0.0630	GT062-12	GT062-12A
0.375	1.000	0.0630	GT062-16	GT062-16A
0.375	1.250	0.0630	GT062-20	GT062-20A
0.375	0.250	0.0700	GT069-4	GT069-4A
0.375	0.375	0.0700	GT069-6	GT069-6A
0.375	0.500	0.0700	GT069-8	GT069-8A
0.375	0.750	0.0700	GT069-12	GT069-12A
0.375	1.000	0.0700	GT069-16	GT069-16A
0.375	1.250	0.0700	GT069-20	GT069-20A

A MIN HOLE	B MAX DEPTH	C TOOL WIDTH	UNCOATED ORDER #	TiAlN ORDER #
3/8" SHANK DIA., .110 OFFSET, 2 1/2" OAL				
0.375	0.250	0.088	GT087-4	GT087-4A
0.375	0.375	0.088	GT087-6	GT087-6A
0.375	0.500	0.088	GT087-8	GT087-8A
0.375	0.750	0.088	GT087-12	GT087-12A
0.375	1.000	0.088	GT087-16	GT087-16A
0.375	1.250	0.088	GT087-20	GT087-20A
0.375	0.375	0.127	GT126-6	GT126-6A
0.375	0.500	0.127	GT126-8	GT126-8A
0.375	0.750	0.127	GT126-12	GT126-12A
0.375	1.000	0.127	GT126-16	GT126-16A
0.375	1.250	0.127	GT126-20	GT126-20A
0.375	0.375	0.158	GT157-6	GT157-6A
0.375	0.500	0.158	GT157-8	GT157-8A
0.375	0.750	0.158	GT157-12	GT157-12A
0.375	1.000	0.158	GT157-16	GT157-16A
0.375	1.250	0.158	GT157-20	GT157-20A
1/2" SHANK DIA., .160 OFFSET, 3" OAL				
0.500	0.500	0.094	GT093-8	GT093-8A
0.500	0.750	0.094	GT093-12	GT093-12A
0.500	1.000	0.094	GT093-16	GT093-16A
0.500	1.250	0.094	GT093-20	GT093-20A
0.500	1.500	0.094	GT093-24	GT093-24A
0.500	0.500	0.126	GT125-8	GT125-8A
0.500	0.750	0.126	GT125-12	GT125-12A
0.500	1.000	0.126	GT125-16	GT125-16A
0.500	1.250	0.126	GT125-20	GT125-20A
0.500	1.500	0.126	GT125-24	GT125-24A
0.500	0.500	0.157	GT156-8	GT156-8A
0.500	0.750	0.157	GT156-12	GT156-12A
0.500	1.000	0.157	GT156-16	GT156-16A
0.500	1.250	0.157	GT156-20	GT156-20A
0.500	1.500	0.157	GT156-24	GT156-24A
0.500	0.500	0.188	GT187-8	GT187-8A
0.500	0.750	0.188	GT187-12	GT187-12A
0.500	1.000	0.188	GT187-16	GT187-16A
0.500	1.250	0.188	GT187-20	GT187-20A
0.500	1.500	0.188	GT187-24	GT187-24A
0.500	0.500	0.251	GT250-8	GT250-8A
0.500	0.750	0.251	GT250-12	GT250-12A
0.500	1.000	0.251	GT250-16	GT250-16A
0.500	1.250	0.251	GT250-20	GT250-20A
0.500	1.500	0.251	GT250-24	GT250-24A

TOOL HOLDERS - SEE PAGE 15

SINGLE POINT TOOLS

Stocked: TiAlN = A; Optional: TiN = C, TiCN = N

Scientific Cutting Tools, Inc.

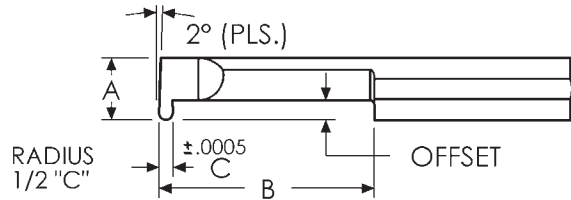
(805) 584-9495
(800) 383-2244

Fax: (805) 584-9629
Fax: (888) 728-3295

Web: www.sct-usa.com
Email: sales@sct-usa.com



GROOVE TOOLS - FULL RADIUS - SOLID CARBIDE



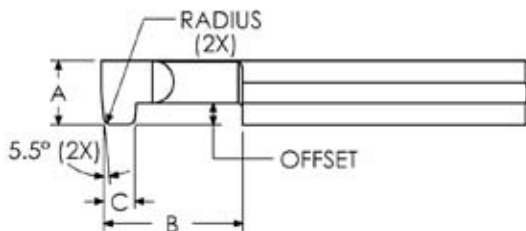
A MIN HOLE	B MAX DEPTH	C TOOL WIDTH	UNCOATED ORDER #	TiAlN ORDER #
3/16" SHANK DIA., .050 OFFSET, 2" OAL				
0.187	0.250	0.0175	GFR017K-4	GFR017K-4A
0.187	0.375	0.0175	GFR017K-6	GFR017K-6A
0.187	0.500	0.0175	GFR017K-8	GFR017K-8A
0.187	0.625	0.0175	GFR017K-10	GFR017K-10A
0.187	0.250	0.0255	GFR025K-4	GFR025K-4A
0.187	0.375	0.0255	GFR025K-6	GFR025K-6A
0.187	0.500	0.0255	GFR025K-8	GFR025K-8A
0.187	0.625	0.0255	GFR025K-10	GFR025K-10A
0.187	0.250	0.0305	GFR030K-4	GFR030K-4A
0.187	0.375	0.0305	GFR030K-6	GFR030K-6A
0.187	0.500	0.0305	GFR030K-8	GFR030K-8A
0.187	0.625	0.0305	GFR030K-10	GFR030K-10A
1/4" SHANK DIA., .060 OFFSET, 2 1/2" OAL				
0.250	0.250	0.0175	GFR017Q-4	GFR017Q-4A
0.250	0.375	0.0175	GFR017Q-6	GFR017Q-6A
0.250	0.500	0.0175	GFR017Q-8	GFR017Q-8A
0.250	0.625	0.0175	GFR017Q-10	GFR017Q-10A
0.250	0.250	0.0255	GFR025Q-4	GFR025Q-4A
0.250	0.375	0.0255	GFR025Q-6	GFR025Q-6A
0.250	0.500	0.0255	GFR025Q-8	GFR025Q-8A
0.250	0.625	0.0255	GFR025Q-10	GFR025Q-10A
0.250	0.250	0.0305	GFR030Q-4	GFR030Q-4A
0.250	0.375	0.0305	GFR030Q-6	GFR030Q-6A
0.250	0.500	0.0305	GFR030Q-8	GFR030Q-8A
0.250	0.625	0.0305	GFR030Q-10	GFR030Q-10A
5/16" SHANK DIA., .110 OFFSET, 2 1/2" OAL				
0.312	0.250	0.0335	GFR033-4	GFR033-4A
0.312	0.375	0.0335	GFR033-6	GFR033-6A
0.312	0.500	0.0335	GFR033-8	GFR033-8A
0.312	0.750	0.0335	GFR033-12	GFR033-12A
0.312	0.250	0.0385	GFR038-4	GFR038-4A
0.312	0.375	0.0385	GFR038-6	GFR038-6A
0.312	0.500	0.0385	GFR038-8	GFR038-8A
0.312	0.750	0.0385	GFR038-12	GFR038-12A

A MIN HOLE	B MAX DEPTH	C TOOL WIDTH	UNCOATED ORDER #	TiAlN ORDER #
3/8" SHANK DIA., .110 OFFSET, 2 1/2" OAL				
0.375	0.250	0.040	GFR039-4	GFR039-4A
0.375	0.375	0.040	GFR039-6	GFR039-6A
0.375	0.500	0.040	GFR039-8	GFR039-8A
0.375	0.750	0.040	GFR039-12	GFR039-12A
0.375	1.000	0.040	GFR039-16	GFR039-16A
0.375	1.250	0.040	GFR039-20	GFR039-20A
0.375	0.250	0.047	GFR046-4	GFR046-4A
0.375	0.375	0.047	GFR046-6	GFR046-6A
0.375	0.500	0.047	GFR046-8	GFR046-8A
0.375	0.750	0.047	GFR046-12	GFR046-12A
0.375	1.000	0.047	GFR046-16	GFR046-16A
0.375	1.250	0.047	GFR046-20	GFR046-20A
0.375	0.250	0.056	GFR055-4	GFR055-4A
0.375	0.375	0.056	GFR055-6	GFR055-6A
0.375	0.500	0.056	GFR055-8	GFR055-8A
0.375	0.750	0.056	GFR055-12	GFR055-12A
0.375	1.000	0.056	GFR055-16	GFR055-16A
0.375	1.250	0.056	GFR055-20	GFR055-20A
0.375	0.250	0.063	GFR062-4	GFR062-4A
0.375	0.375	0.063	GFR062-6	GFR062-6A
0.375	0.500	0.063	GFR062-8	GFR062-8A
0.375	0.750	0.063	GFR062-12	GFR062-12A
0.375	1.000	0.063	GFR062-16	GFR062-16A
0.375	1.250	0.063	GFR062-20	GFR062-20A
0.375	0.250	0.070	GFR069-4	GFR069-4A
0.375	0.375	0.070	GFR069-6	GFR069-6A
0.375	0.500	0.070	GFR069-8	GFR069-8A
0.375	0.750	0.070	GFR069-12	GFR069-12A
0.375	1.000	0.070	GFR069-16	GFR069-16A
0.375	1.250	0.070	GFR069-20	GFR069-20A
0.375	0.250	0.088	GFR087-4	GFR087-4A
0.375	0.375	0.088	GFR087-6	GFR087-6A
0.375	0.500	0.088	GFR087-8	GFR087-8A
0.375	0.750	0.088	GFR087-12	GFR087-12A
0.375	1.000	0.088	GFR087-16	GFR087-16A
0.375	1.250	0.088	GFR087-20	GFR087-20A

A MIN HOLE	B MAX DEPTH	C TOOL WIDTH	UNCOATED ORDER #	TiAlN ORDER #
3/8" SHANK DIA., .110 OFFSET, 2 1/2" OAL				
0.375	0.375	0.125	GFR124-6	GFR124-6A
0.375	0.500	0.125	GFR124-8	GFR124-8A
0.375	0.750	0.125	GFR124-12	GFR124-12A
0.375	1.000	0.125	GFR124-16	GFR124-16A
0.375	1.250	0.125	GFR124-20	GFR124-20A
1/2" SHANK DIA., .160 OFFSET, 3" OAL				
0.500	0.500	0.094	GFR093-8	GFR093-8A
0.500	0.750	0.094	GFR093-12	GFR093-12A
0.500	1.000	0.094	GFR093-16	GFR093-16A
0.500	1.250	0.094	GFR093-20	GFR093-20A
0.500	1.500	0.094	GFR093-24	GFR093-24A
0.500	0.500	0.126	GFR125-8	GFR125-8A
0.500	0.750	0.126	GFR125-12	GFR125-12A
0.500	1.000	0.126	GFR125-16	GFR125-16A
0.500	1.250	0.126	GFR125-20	GFR125-20A
0.500	1.500	0.126	GFR125-24	GFR125-24A
0.500	0.500	0.157	GFR156-8	GFR156-8A
0.500	0.750	0.157	GFR156-12	GFR156-12A
0.500	1.000	0.157	GFR156-16	GFR156-16A
0.500	1.250	0.157	GFR156-20	GFR156-20A
0.500	1.500	0.157	GFR156-24	GFR156-24A
0.500	0.500	0.188	GFR187-8	GFR187-8A
0.500	0.750	0.188	GFR187-12	GFR187-12A
0.500	1.000	0.188	GFR187-16	GFR187-16A
0.500	1.250	0.188	GFR187-20	GFR187-20A
0.500	1.500	0.188	GFR187-24	GFR187-24A
0.500	0.500	0.251	GFR250-8	GFR250-8A
0.500	0.750	0.251	GFR250-12	GFR250-12A
0.500	1.000	0.251	GFR250-16	GFR250-16A
0.500	1.250	0.251	GFR250-20	GFR250-20A
0.500	1.500	0.251	GFR250-24	GFR250-24A

TOOL HOLDERS - SEE PAGE 15

GROOVE TOOLS - O-RING - SOLID CARBIDE



A MIN HOLE	B MAX DEPTH	C GROOVE WIDTH	RADIUS	UNCOATED ORDER #	TiAlN ORDER #
1/4" SHANK DIA., .110 OFFSET, 2 1/2" OAL					
0.250	0.500	0.097	0.015	GOR096-8	GOR096-8A
0.250	0.562	0.142	0.040	GOR141-9	GOR141-9A
0.250	0.625	0.145	0.040	GOR144-10	GOR144-10A

A MIN HOLE	B MAX DEPTH	C GROOVE WIDTH	RADIUS	UNCOATED ORDER #	TiAlN ORDER #
3/8" SHANK DIA., .125 OFFSET, 2 1/2" OAL					
0.375	0.750	0.175	0.015	GOR174-12	GOR174-12A
0.375	0.812	0.209	0.040	GOR208-13	GOR208-13A
0.375	0.937	0.242	0.040	GOR241-15	GOR241-15A

Stocked: TiAlN = A; Optional: TiN = C, TiCN = N



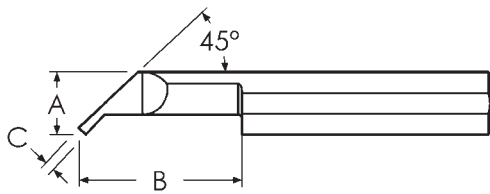
(805) 584-9495
(800) 383-2244

Scientific Cutting Tools, Inc.

Fax: (805) 584-9629
Fax: (888) 728-3295

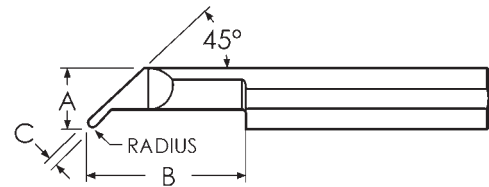
Web: www.sct-usa.com
Email: sales@sct-usa.com

UNDERCUT GROOVE TOOLS - SOLID CARBIDE



Undercut Groove Tools

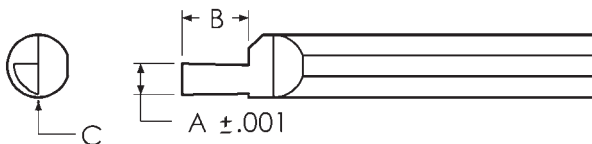
A MIN HOLE	B MAX DEPTH	C TOOL WIDTH	UNCOATED ORDER #	TiAlN ORDER #
1/4" SHANK DIA., 0.060 OFFSET, 2 1/2" OAL				
0.250	0.500	0.031	UC25030-8	UC25030-8A
0.250	1.000	0.031	UC25030-16	UC25030-16A
5/16" SHANK DIA., 0.110 OFFSET, 2 1/2" OAL				
0.310	0.500	0.051	UC31050-8	UC31050-8A
0.310	1.000	0.051	UC31050-16	UC31050-16A
0.310	1.000	0.063	UC31062-16	UC31062-16A
0.310	1.250	0.063	UC31062-20	UC31062-20A
3/8" SHANK DIA., 0.110 OFFSET, 2 1/2" OAL				
0.375	1.000	0.063	UC37062-16	UC37062-16A
0.375	1.250	0.063	UC37062-20	UC37062-20A
0.375	1.000	0.094	UC37093-16	UC37093-16A
0.375	1.250	0.094	UC37093-20	UC37093-20A
0.375	1.000	0.126	UC37125-16	UC37125-16A
0.375	1.250	0.126	UC37125-20	UC37125-20A
1/2" SHANK DIA., 0.160 OFFSET, 3" OAL				
0.500	1.000	0.063	UC50062-16	UC50062-16A
0.500	1.500	0.063	UC50062-24	UC50062-24A
0.500	1.000	0.094	UC50093-16	UC50093-16A
0.500	1.500	0.094	UC50093-24	UC50093-24A
0.500	1.000	0.126	UC50125-16	UC50125-16A
0.500	1.500	0.126	UC50125-24	UC50125-24A



Undercut & Profile Groove Tools

A MIN HOLE	B MAX DEPTH	C TOOL WIDTH	UNCOATED ORDER #	TiAlN ORDER #
1/4" SHANK DIA., 0.060 OFFSET, 2 1/2" OAL				
0.250	0.500	0.031	UP25030-8	UP25030-8A
0.250	1.000	0.031	UP25030-16	UP25030-16A
5/16" SHANK DIA., 0.110 OFFSET, 2 1/2" OAL				
0.310	0.500	0.051	UP31050-8	UP31050-8A
0.310	1.000	0.051	UP31050-16	UP31050-16A
0.310	1.000	0.063	UP31062-16	UP31062-16A
0.310	1.250	0.063	UP31062-20	UP31062-20A
3/8" SHANK DIA., 0.110 OFFSET, 2 1/2" OAL				
0.375	1.000	0.063	UP37062-16	UP37062-16A
0.375	1.250	0.063	UP37062-20	UP37062-20A
0.375	1.000	0.094	UP37093-16	UP37093-16A
0.375	1.250	0.094	UP37093-20	UP37093-20A
0.375	1.000	0.126	UP37125-16	UP37125-16A
0.375	1.250	0.126	UP37125-20	UP37125-20A
1/2" SHANK DIA., 0.160 OFFSET, 3" OAL				
0.500	1.000	0.063	UP50062-16	UP50062-16A
0.500	1.500	0.063	UP50062-24	UP50062-24A
0.500	1.000	0.094	UP50093-16	UP50093-16A
0.500	1.500	0.094	UP50093-24	UP50093-24A
0.500	1.000	0.126	UP50125-16	UP50125-16A
0.500	1.500	0.126	UP50125-24	UP50125-24A

FACE GROOVE TOOLS - SOLID CARBIDE



A GROOVE WIDTH	B GROOVE DEPTH	C MIN. DIA.	UNCOATED ORDER #	TiAlN ORDER #
1/8" SHANK DIA., 1 1/2" OAL				
0.015	0.040	0.135	FG125-015	FG125-015A
0.020	0.050	0.135	FG125-020	FG125-020A
0.025	0.050	0.135	FG125-025	FG125-025A
0.030	0.060	0.135	FG125-030	FG125-030A
3/16" SHANK DIA., 2" OAL				
0.035	0.070	0.195	FG187-035	FG187-035A
0.040	0.080	0.195	FG187-040	FG187-040A
0.045	0.090	0.195	FG187-045	FG187-045A
0.050	0.100	0.195	FG187-050	FG187-050A
1/4" SHANK DIA., 2 1/2" OAL				
0.021	0.050	0.260	FG250-020	FG250-020A
0.031	0.060	0.260	FG250-030	FG250-030A
0.041	0.080	0.260	FG250-040	FG250-040A
0.051	0.100	0.260	FG250-050	FG250-050A

A GROOVE WIDTH	B GROOVE DEPTH	C MIN. DIA.	UNCOATED ORDER #	TiAlN ORDER #
5/16" SHANK DIA., 2 1/2" OAL				
0.031	0.060	0.320	FG312-030	FG312-030A
0.041	0.080	0.320	FG312-040	FG312-040A
0.051	0.100	0.320	FG312-050	FG312-050A
0.063	0.130	0.320	FG312-062	FG312-062A
3/8" SHANK DIA., 2 1/2" OAL				
0.031	0.060	0.385	FG375-030	FG375-030A
0.063	0.130	0.385	FG375-062	FG375-062A
0.094	0.190	0.385	FG375-093	FG375-093A
0.126	0.250	0.385	FG375-125	FG375-125A
1/2" SHANK DIA., 3" OAL				
0.063	0.130	0.510	FG500-062	FG500-062A
0.094	0.190	0.510	FG500-093	FG500-093A
0.125	0.250	0.510	FG500-125	FG500-125A
0.157	0.310	0.510	FG500-156	FG500-156A

A GROOVE WIDTH	B GROOVE DEPTH	C MIN. DIA.	UNCOATED ORDER #	TiAlN ORDER #
5/8" SHANK DIA., 3 1/2" OAL				
0.063	0.130	0.635	FG625-062	FG625-062A
0.094	0.190	0.635	FG625-093	FG625-093A
0.126	0.250	0.635	FG625-125	FG625-125A
0.157	0.310	0.635	FG625-156	FG625-156A
0.188	0.375	0.635	FG625-187	FG625-187A
3/4" SHANK DIA., 4" OAL				
0.063	0.130	0.760	FG750-062	FG750-062A
0.094	0.190	0.760	FG750-093	FG750-093A
0.126	0.250	0.760	FG750-125	FG750-125A
0.157	0.310	0.760	FG750-156	FG750-156A
0.188	0.375	0.760	FG750-187	FG750-187A
0.251	0.500	0.760	FG750-250	FG750-250A

TOOL HOLDERS - SEE PAGE 15

Stocked: TiAlN = A; Optional: TiN = C, TiCN = N

Scientific Cutting Tools, Inc.

(805) 584-9495
(800) 383-2244

Fax: (805) 584-9629
Fax: (888) 728-3295

Web: www.sct-usa.com
Email: sales@sct-usa.com



SINGLE POINT TOOLS