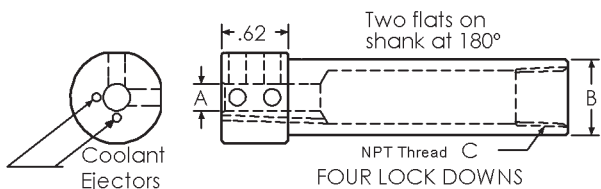


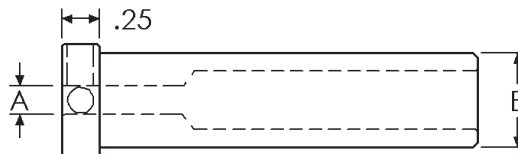
# COOLANT HOLDERS



*QHC Holders*

A I.D.	B O.D.	C NPT	OAL	Order #	Replacement Parts Kit (6) Set Screws (1) Allen Key
0.1250	0.375	0.062NPT	2.50	<b>QHC37-1/8</b>	PKH-3/16
0.1562	0.375	0.062NPT	2.50	<b>QHC37-5/32</b>	PKH-3/16
0.1875	0.375	0.062NPT	2.50	<b>QHC37-3/16</b>	PKH-3/16
0.1250	0.500	0.125NPT	2.75	<b>QHC50-1/8</b>	PKH-1/4
0.1875	0.500	0.125NPT	2.75	<b>QHC50-3/16</b>	PKH-3/16
0.2500	0.500	0.125NPT	2.75	<b>QHC50-1/4</b>	PKH-3/16
0.1250	0.625	0.250NPT	3.25	<b>QHC62-1/8</b>	PKH-1/4
0.1562	0.625	0.250NPT	3.25	<b>QHC62-5/32</b>	PKH-1/4
0.1875	0.625	0.250NPT	3.25	<b>QHC62-3/16</b>	PKH-1/4
0.2187	0.625	0.250NPT	3.25	<b>QHC62-7/32</b>	PKH-1/4
0.2500	0.625	0.250NPT	3.25	<b>QHC62-1/4</b>	PKH-1/4
0.1250	0.750	0.375NPT	3.25	<b>QHC75-1/8</b>	PKH-3/8
0.1562	0.750	0.375NPT	3.25	<b>QHC75-5/32</b>	PKH-3/8
0.1875	0.750	0.375NPT	3.25	<b>QHC75-3/16</b>	PKH-1/4
0.2187	0.750	0.375NPT	3.25	<b>QHC75-7/32</b>	PKH-1/4
0.2500	0.750	0.375NPT	3.25	<b>QHC75-1/4</b>	PKH-1/4
0.3125	0.750	0.375NPT	3.25	<b>QHC75-5/16</b>	PKH-1/4
0.3750	0.750	0.375NPT	3.25	<b>QHC75-3/8</b>	PKH-1/4
0.1250	1.000	0.500NPT	3.25	<b>QHC10-1/8</b>	PKH-1/2
0.1875	1.000	0.500NPT	3.25	<b>QHC10-3/16</b>	PKH-1/2
0.2500	1.000	0.500NPT	3.25	<b>QHC10-1/4</b>	PKH-3/8
0.3125	1.000	0.500NPT	3.25	<b>QHC10-5/16</b>	PKH-3/8
0.3750	1.000	0.500NPT	3.25	<b>QHC10-3/8</b>	PKH-3/8
0.5000	1.000	0.500NPT	3.25	<b>QHC10-1/2</b>	PKH-1/4

# STANDARD HOLDERS



TWO LOCK DOWNS

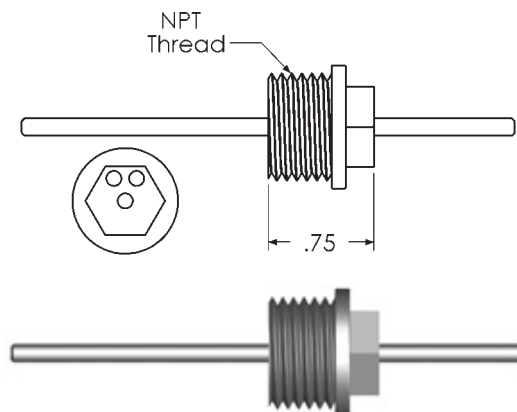
*Standard Holders*

A I.D.	B O.D.	OAL	Order #	Replacement Parts Kit (6) Set Screws (1) Allen Key
0.1250	0.375	2.00	<b>DH37-1/8</b>	PKH-3/16
0.1562	0.375	2.00	<b>DH37-5/32</b>	PKH-3/16
0.1875	0.375	2.00	<b>DH37-3/16</b>	PKH-3/16
0.2187	0.375	2.00	<b>DH37-7/32</b>	PKH-3/16
0.2500	0.375	2.00	<b>DH37-1/4</b>	PKH-1/8
0.1250	0.500	2.75	<b>DH50-1/8</b>	PKH-1/4
0.1562	0.500	2.75	<b>DH50-5/32</b>	PKH-1/4
0.1875	0.500	2.75	<b>DH50-3/16</b>	PKH-1/4
0.2187	0.500	2.75	<b>DH50-7/32</b>	PKH-3/16
0.2500	0.500	2.75	<b>DH50-1/4</b>	PKH-3/16
0.3125	0.500	2.75	<b>DH50-5/16</b>	PKH-3/16
0.3750	0.500	2.75	<b>DH50-3/8</b>	PKH-1/8
0.1250	0.625	2.75	<b>DH62-1/8</b>	PKH-1/4
0.1562	0.625	2.75	<b>DH62-5/32</b>	PKH-1/4
0.1875	0.625	2.75	<b>DH62-3/16</b>	PKH-1/4
0.2187	0.625	2.75	<b>DH62-7/32</b>	PKH-1/4
0.2500	0.625	2.75	<b>DH62-1/4</b>	PKH-1/4
0.3125	0.625	2.75	<b>DH62-5/16</b>	PKH-3/16
0.3750	0.625	2.75	<b>DH62-3/8</b>	PKH-3/16
0.1250	0.750	2.75	<b>DH75-1/8</b>	PKH-3/8
0.1875	0.750	2.75	<b>DH75-3/16</b>	PKH-3/8
0.2500	0.750	2.75	<b>DH75-1/4</b>	PKH-1/4
0.3125	0.750	2.75	<b>DH75-5/16</b>	PKH-1/4
0.3750	0.750	2.75	<b>DH75-3/8</b>	PKH-1/4
0.5000	0.750	2.75	<b>DH75-1/2</b>	PKH-3/16

# BACK STOPS

*Back Stops for QHC Series*

Outside Diameter	NPT Thread	Stop Rod Diameter	Stop Rod OAL	Holder Series	Order #	Kit (6) Set Screws (1) Allen Key
0.375	0.062NPT	0.093	2.75	QHC37	<b>QHC37-BKS</b>	PKH-1/8
0.500	0.125NPT	0.125	3.00	QHC50	<b>QHC50-BKS</b>	PKH-1/8
0.625	0.250NPT	0.125	3.00	QHC62	<b>QHC62-BKS</b>	PKH-3/16
0.750	0.375NPT	0.125	3.00	QHC75	<b>QHC75-BKS</b>	PKH-3/16
1.000	0.500NPT	0.125	3.50	QHC10	<b>QHC10-BKS</b>	PKH-3/16



## Scientific Cutting Tools, Inc.

(805) 584-9495  
(800) 383-2244

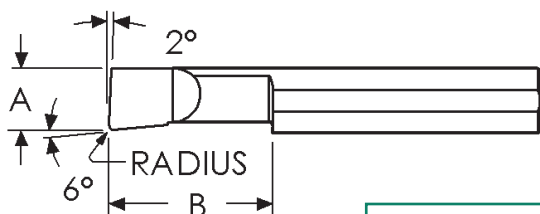
Fax: (805) 584-9629  
Fax: (888) 728-3295

Web: [www.sct-usa.com](http://www.sct-usa.com)  
Email: [sales@sct-usa.com](mailto:sales@sct-usa.com)



SINGLE POINT TOOLS

# RADIUS BORING BARS - SOLID CARBIDE



Radius .003" to .005" — 1/8" SHANK DIA.  
 Radius .005" to .008" — 3/16" to 1/2" SHANK DIA.

SINGLE POINT TOOLS

A MIN HOLE	B MAX DEPTH	UNCOATED ORDER #	TiAlN ORDER #
<b>1/8" SHANK DIA., 1 1/2" OAL</b>			
0.050	0.150	B050150R	B050150RA
0.050	0.200	B050200R	B050200RA
0.050	0.300	B050300R	B050300RA
0.050	0.400	B050400R	B050400RA
0.060	0.150	B060150R	B060150RA
0.060	0.200	B060200R	B060200RA
0.060	0.300	B060300R	B060300RA
0.060	0.400	B060400R	B060400RA
0.060	0.500	B060500R	B060500RA
0.080	0.150	B080150R	B080150RA
0.080	0.200	B080200R	B080200RA
0.080	0.300	B080300R	B080300RA
0.080	0.400	B080400R	B080400RA
0.080	0.500	B080500R	B080500RA
0.080	0.600	B080600R	B080600RA
0.100	0.150	B100150R	B100150RA
0.100	0.200	B100200R	B100200RA
0.100	0.300	B100300R	B100300RA
0.100	0.400	B100400R	B100400RA
0.100	0.500	B100500R	B100500RA
0.100	0.600	B100600R	B100600RA
0.100	0.700	B100700R	B100700RA
0.110	0.150	B110150R	B110150RA
0.110	0.200	B110200R	B110200RA
0.110	0.300	B110300R	B110300RA
0.110	0.400	B110400R	B110400RA
0.110	0.500	B110500R	B110500RA
0.110	0.600	B110600R	B110600RA
0.110	0.700	B110700R	B110700RA
<b>3/16" SHANK DIA., 2" OAL</b>			
0.120	0.250	B120250R	B120250RA
0.120	0.350	B120350R	B120350RA
0.120	0.500	B120500R	B120500RA
0.120	0.600	B120600R	B120600RA
0.120	0.700	B120700R	B120700RA
0.120	0.800	B120800R	B120800RA
0.140	0.250	B140250R	B140250RA
0.140	0.400	B140400R	B140400RA
0.140	0.500	B140500R	B140500RA
0.140	0.600	B140600R	B140600RA
0.140	0.700	B140700R	B140700RA
0.140	0.750	B140750R	B140750RA
0.140	0.800	B140800R	B140800RA
0.160	0.250	B160250R	B160250RA
0.160	0.400	B160400R	B160400RA
0.160	0.500	B160500R	B160500RA

A MIN HOLE	B MAX DEPTH	UNCOATED ORDER #	TiAlN ORDER #
<b>3/16" SHANK DIA., 2" OAL</b>			
0.160	0.600	B160600R	B160600RA
0.160	0.750	B160750R	B160750RA
0.160	0.900	B160900R	B160900RA
0.160	1.000	B1601000R	B1601000RA
<b>1/4" SHANK DIA., 2 1/2" OAL</b>			
0.180	0.350	B180350R	B180350RA
0.180	0.500	B180500R	B180500RA
0.180	0.600	B180600R	B180600RA
0.180	0.750	B180750R	B180750RA
0.180	0.900	B180900R	B180900RA
0.180	1.000	B1801000R	B1801000RA
0.180	1.100	B1801100R	B1801100RA
1.180	1.250	B1801250R	B1801250RA
0.180	1.500	B1801500R	B1801500RA
0.200	0.400	B200400R	B200400RA
0.200	0.500	B200500R	B200500RA
0.200	0.600	B200600R	B200600RA
0.200	0.700	B200700R	B200700RA
0.200	0.800	B200800R	B200800RA
0.200	0.900	B200900R	B200900RA
0.200	1.000	B2001000R	B2001000RA
0.200	1.100	B2001100R	B2001100RA
0.200	1.200	B2001200R	B2001200RA
0.200	1.300	B2001300R	B2001300RA
<b>5/16" SHANK DIA., 2 1/2" OAL</b>			
0.230	0.400	B230400R	B230400RA
0.230	0.500	B230500R	B230500RA
0.230	0.600	B230600R	B230600RA
0.230	0.700	B230700R	B230700RA
0.230	0.800	B230800R	B230800RA
0.230	0.900	B230900R	B230900RA
0.230	1.000	B2301000R	B2301000RA
0.230	1.100	B2301100R	B2301100RA
0.230	1.150	B2301150R	B2301150RA
0.230	1.200	B2301200R	B2301200RA
0.230	1.250	B2301250R	B2301250RA
0.230	1.400	B2301400R	B2301400RA
0.230	1.500	B2301500R	B2301500RA
0.230	1.600	B2301600R	B2301600RA
0.290	0.500	B290500R	B290500RA
0.290	0.600	B290600R	B290600RA
0.290	0.750	B290750R	B290750RA
0.290	0.900	B290900R	B290900RA
0.290	1.000	B2901000R	B2901000RA
0.290	1.100	B2901100R	B2901100RA
0.290	1.250	B2901250R	B2901250RA
0.290	1.350	B2901350R	B2901350RA
0.290	1.500	B2901500R	B2901500RA
0.290	1.600	B2901600R	B2901600RA
0.290	1.750	B2901750R	B2901750RA

A MIN HOLE	B MAX DEPTH	UNCOATED ORDER #	TiAlN ORDER #
<b>3/8" SHANK DIA., 2 1/2" OAL</b>			
0.320	0.500	B320500R	B320500RA
0.320	0.600	B320600R	B320600RA
0.320	0.750	B320750R	B320750RA
0.320	0.900	B320900R	B320900RA
0.320	1.000	B3201000R	B3201000RA
0.320	1.100	B3201100R	B3201100RA
0.320	1.250	B3201250R	B3201250RA
0.320	1.500	B3201500R	B3201500RA
0.320	1.600	B3201600R	B3201600RA
0.320	1.800	B3201800R	B3201800RA
<b>3/8" SHANK DIA., 4" OAL</b>			
0.320	2.000	B3202000R	B3202000RA
0.320	2.500	B3202500R	B3202500RA
0.320	3.000	B3203000R	B3203000RA
<b>3/8" SHANK DIA., 2 1/2" OAL</b>			
0.360	0.500	B360500R	B360500RA
0.360	0.600	B360600R	B360600RA
0.360	0.750	B360750R	B360750RA
0.360	0.900	B360900R	B360900RA
0.360	1.000	B3601000R	B3601000RA
0.360	1.150	B3601150R	B3601150RA
0.360	1.250	B3601250R	B3601250RA
0.360	1.500	B3601500R	B3601500RA
0.360	1.600	B3601600R	B3601600RA
0.360	1.800	B3601800R	B3601800RA
<b>3/8" SHANK DIA., 4" OAL</b>			
0.360	2.000	B3602000R	B3602000RA
0.360	2.500	B3602500R	B3602500RA
0.360	3.000	B3603000R	B3603000RA
<b>1/2" SHANK DIA., 3" OAL</b>			
0.490	0.750	B490750R	B490750RA
0.490	1.000	B4901000R	B4901000RA
0.490	1.250	B4901250R	B4901250RA
0.490	1.500	B4901500R	B4901500RA
<b>1/2" SHANK DIA., 4" OAL</b>			
0.490	2.000	B4902000R	B4902000RA
0.490	2.500	B4902500R	B4902500RA
0.490	2.600	B4902600R	B4902600RA
0.490	2.750	B4902750R	B4902750RA
<b>1/2" SHANK DIA., 6" OAL</b>			
0.490	3.000	B4903000R	B4903000RA
0.490	3.500	B4903500R	B4903500RA
0.490	4.000	B4904000R	B4904000RA
0.490	4.500	B4904500R	B4904500RA

TOOL HOLDERS - SEE PAGE 15

Stocked: TiAlN = A; Optional: TiN = C, TiCN = N



Scientific Cutting Tools, Inc.

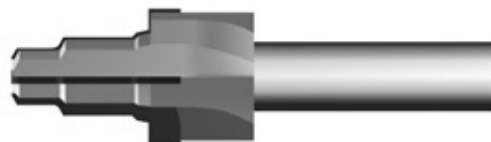
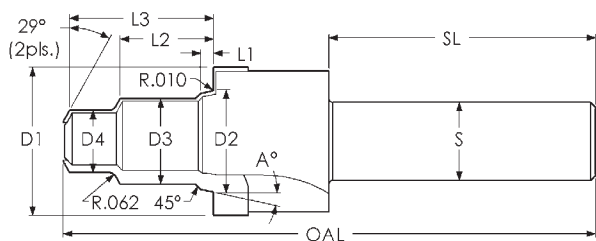
(805) 584-9495  
 (800) 383-2244

Fax: (805) 584-9629  
 Fax: (888) 728-3295

Web: www.sct-usa.com  
 Email: sales@sct-usa.com

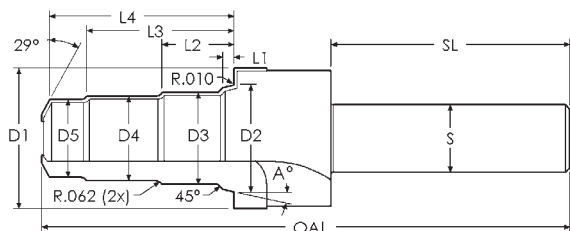
# HYDRAFORCE CARTRIDGE VALVE TOOLS - CARBIDE TIPPED

## TWO WAY CAVITY



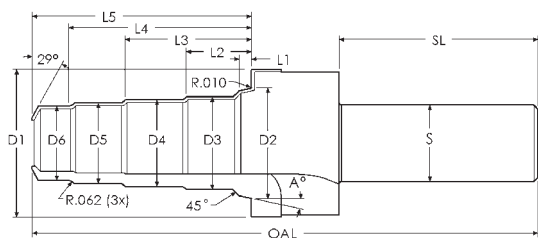
A	D1	D2	D3	D4	L1	L2	L3	OAL	S	SL	ORDER #
15°	1.188	0.813	0.688	0.501	0.108	0.750	1.156	4.00	0.750	2.12	<b>VC08-2</b>
15°	1.188	0.945	0.812	0.626	0.108	0.932	1.312	4.25	0.750	2.12	<b>VC10-2</b>
15°	1.500	1.150	0.977	0.876	0.138	1.400	1.920	5.25	0.750	2.25	<b>VC12-2</b>
15°	1.750	1.401	1.229	1.127	0.138	1.344	1.844	5.25	0.750	2.25	<b>VC16-2</b>

## THREE WAY CAVITY



A	D1	D2	D3	D4	D5	L1	L2	L3	L4	OAL	S	SL	ORDER #
15°	1.188	0.813	0.688	0.626	0.563	0.108	0.718	1.270	1.703	5.00	0.750	2.12	<b>VC08-3</b>
15°	1.188	0.945	0.812	0.689	0.626	0.108	0.860	1.500	1.875	5.00	0.750	2.12	<b>VC10-3</b>
15°	1.500	1.150	0.975	0.938	0.876	0.108	1.400	2.370	2.890	6.25	0.750	2.25	<b>VC12-3</b>
15°	1.750	1.401	1.234	1.127	1.064	0.138	1.344	2.469	2.968	6.25	0.750	2.25	<b>VC16-3</b>

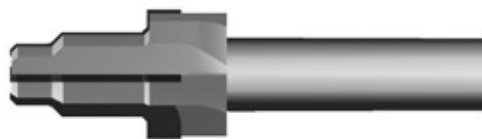
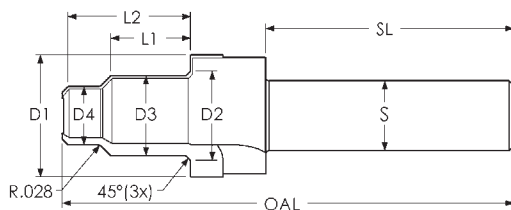
## FOUR WAY CAVITY



A	D1	D2	D3	D4	D5	D6	L1	L2	L3	L4	L5	OAL	S	SL	ORDER #
15°	1.188	0.813	0.688	0.626	0.563	0.501	0.108	0.718	1.270	1.830	2.210	5.50	0.750	2.12	<b>VC08-4</b>
15°	1.188	0.945	0.812	0.751	0.689	0.626	0.108	0.870	1.500	2.125	2.500	5.50	0.750	2.12	<b>VC10-4</b>
15°	1.500	1.150	0.975	0.938	0.876	0.813	0.138	1.400	2.370	3.330	3.860	7.00	0.750	2.25	<b>VC12-4</b>
15°	1.750	1.401	1.234	1.127	1.064	1.002	0.138	1.344	2.469	3.594	4.094	7.25	0.750	2.25	<b>VC16-4</b>

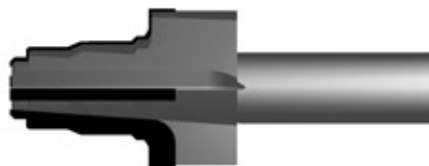
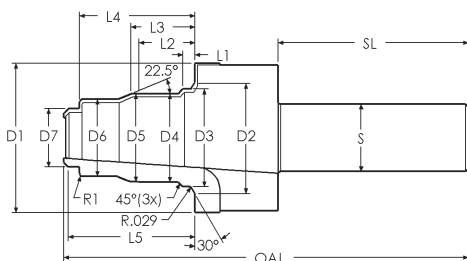


## MS21921 - PORT TOOL - CARBIDE TIPPED



D1	D2	D3	D4	L1	L2	S	SL	OAL	TUBE	THREAD	ORDER #
0.400	0.328	0.277	0.173	0.425	0.570	0.500	2.00	3.00	0.125	0.3125-24UNJF-3B	MS21921-2
0.475	0.391	0.338	0.234	0.429	0.625	0.500	2.00	3.00	0.187	0.3750-24UNJF-3B	MS21921-3
0.600	0.453	0.393	0.302	0.547	0.760	0.500	1.75	3.00	0.250	0.4375-20UNJF-3B	MS21921-4
0.675	0.516	0.455	0.368	0.562	0.800	0.500	1.75	3.00	0.312	0.5000-20UNJF-3B	MS21921-5
0.750	0.578	0.513	0.427	0.578	0.840	0.625	1.75	3.25	0.375	0.5625-18UNJF-3B	MS21921-6
0.900	0.766	0.693	0.554	0.609	0.900	0.625	1.75	3.50	0.500	0.7500-16UNJF-3B	MS21921-8
1.050	0.891	0.810	0.692	0.687	1.020	0.750	2.00	3.75	0.625	0.8750-14UNJF-3B	MS21921-10
1.300	1.078	0.987	0.828	0.687	1.040	0.750	2.13	4.00	0.750	1.0625-12UNJF-3B	MS21921-12
1.550	1.328	1.236	1.076	0.687	1.090	1.000	2.25	4.25	1.000	1.3125-12UNJF-3B	MS21921-16

## BACD2036 - PORT TOOL - CARBIDE TIPPED



D1	D2	D3	D4	D5	D6	D7	L2	L3	L4	R1	S	SL	OAL	THREAD	ORDER #
0.888	0.570	0.4565	0.393	0.387	0.2945	0.170	0.425	0.480	0.971	0.025	0.500	2.00	4.00	0.4375-20UNJF-3B	BACD2036-4
1.012	0.696	0.5825	0.513	0.507	0.4195	0.280	0.450	0.505	1.004	0.025	0.500	2.00	4.00	0.5625-18UNJF-3B	BACD2036-6
1.240	0.883	0.7715	0.693	0.688	0.6110	0.400	0.545	0.605	1.144	0.035	0.750	2.13	4.25	0.7500-18UNJF-3B	BACD2036-8
1.415	1.008	0.8985	0.810	0.804	0.7330	0.490	0.600	0.665	1.215	0.035	0.750	2.13	4.50	0.8750-14UNJF-3B	BACD2036-10
1.665	1.242	1.0885	0.985	0.980	0.8610	0.650	0.625	0.715	1.287	0.050	0.750	2.13	4.50	1.0625-12UNJF-3B	BACD2036-12
1.965	1.495	1.3385	1.235	1.230	1.1140	0.825	0.665	0.755	1.392	0.050	1.000	2.13	4.50	1.3125-16UNJF-3B	BACD2036-16

Scientific Cutting Tools, Inc.

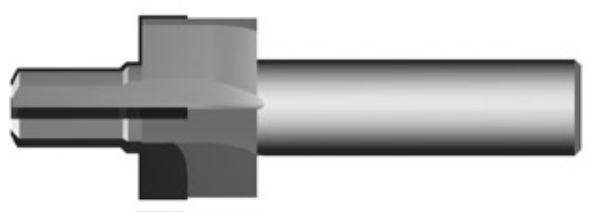
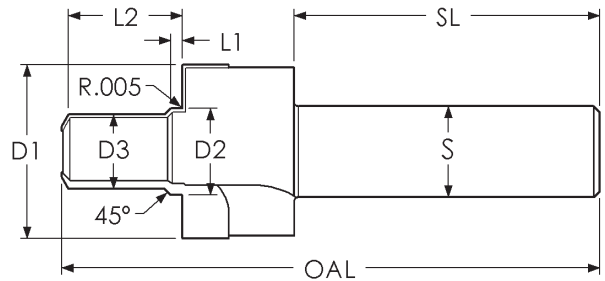
(805) 584-9495  
(800) 383-2244

Fax: (805) 584-9629  
Fax: (888) 728-3295

Web: [www.sct-usa.com](http://www.sct-usa.com)  
Email: [sales@sct-usa.com](mailto:sales@sct-usa.com)

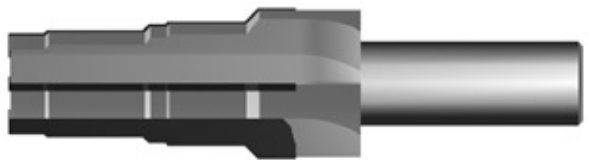


# MS33651 (AND10071) - PORT TOOL - CARBIDE TIPPED

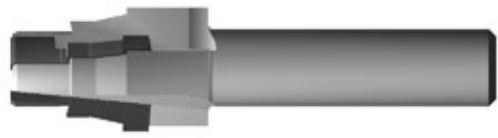


D1	D2	D3	L1	L2	S	SL	OAL	THREAD	ORDER #
1.050	0.523	0.450	0.070	0.690	0.500	1.88	3.25	0.500-20UNF-3B	MS33651

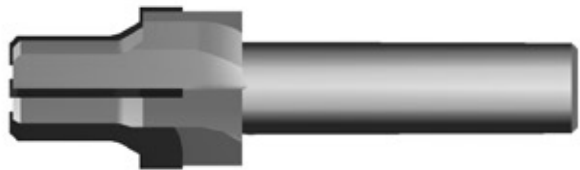
## HARD TO FIND PORT TOOLS - CALL FOR AVAILABILITY



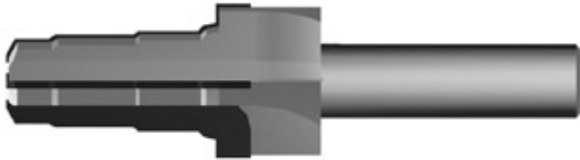
SUN HYDRAULIC



BACU24AB



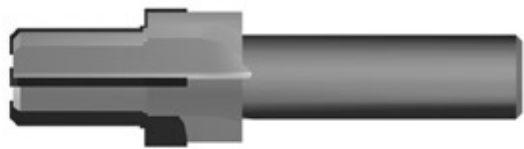
MS20819



COMMON CAVITY



AN818



MS21922

